

40 BANQUET KINGLAKE K194 (AI) (ET) HBR

Ident: VONK194 Tattoo: SNB K194 (T&F) Born: 2/09/2014 AMFU NHFU CAFU DDF

BT EQUATOR 395M
 NMMD78 MILLAH MURRAH EQUATOR D78 (AI)
 MILLAH MURRAH RADO Y119 (AI)

BANQUET TIME FRAME Y135 (AI) (ET)
 VONA250 BANQUET DREAM A250
 BANQUET DREAM V109 (AI) (ET)

Another Dream A250 son. Our former top sire, Duncan D412 is also a son of A250. His sons sold to \$20,000. There are some outstanding D412 grandsons in this Sale. Time Frame Y135, the sire of A250, held the Australian Auction Record for many years after being purchased for \$50,000 by Anvil Angus. Purchase K194 to add length, muscle and weight to your cattle. His sire is the top growth sire at Millah Murrah. Full brother to Lot 39 & 70.

Actual Scrotal: 40 cm Age: 17 months Purchaser: \$

January 2016 Angus Australia BREEDPLAN											
Angus	EBV	Birth Wt.	Milk	200 Wt.	400 Wt.	600 Wt.	Scrotal Size	Carcase Wt.	EMA	Rump Fat	IMF %
	Acc	4.1	17	51	96	133	2.7	68	3.5	-0.9	0.8
		74%	61%	70%	70%	69%	71%	62%	62%	63%	58%

Traits Observed: BWT, 200WT(x2), 400WT, SS, FAT, EMA, IMF

41 BANQUET KAROONDA K280 (AI) HBR

Ident: VONK280 Tattoo: SNB K280 (T&F) Born: 18/09/2014 AMFU NHFU CAFU DDFU

WITTALOCKA X10 (AI)
 VOND412 BANQUET DUNCAN D412 (AI)
 BANQUET DREAM A250

BANQUET GETAWAY Z136 (AI) (ET)
 VONB233 BANQUET DREAM B233
 BANQUET DREAM Y134 (AI) (ET)

Another power son of Duncan D412. K280 has a strong head and jaw. Is rugged with great capacity and growth. This is why we are still using D412. The grand dam, K230, is a flush sister to the \$50,000 Time Frame Y135. Half brother sold for \$6,000.

Actual Scrotal: 39 cm Age: 17 months Purchaser: \$

January 2016 Angus Australia BREEDPLAN											
Angus	EBV	Birth Wt.	Milk	200 Wt.	400 Wt.	600 Wt.	Scrotal Size	Carcase Wt.	EMA	Rump Fat	IMF %
	Acc	6.8	6.0	40	77	105	2.4	51	-0.2	1.2	1.3
		73%	53%	68%	69%	67%	71%	58%	57%	60%	49%

Traits Observed: GL, CE, BWT, 200WT(x2), 400WT, SS, FAT, EMA, IMF

42 BANQUET KOOKABURRA K285 (AI) HBR

Ident: VONK285 Tattoo: SNB K285 (T&F) Born: 19/09/2014 AMFU NHFU CAFU DDFU

ARDROSSAN EQUATOR A241 (AI) (ET)
 NZCF77 KO A241 EQUATOR F77 (AI) (ET)
 VERMONT DREAM Y301 (AI) (ET)

BANQUET EXTRA LIMIT Y046 (AI) (ET)
 VONA344 BANQUET DREAM A344
 BANQUET DREAM Y216 (AI) (ET)

If you buy this youngster you will be laughing with him! He will add length and polish the coats on your calves. F77 appears to add extra dimension to his sons. Remember the old advice "Length that weighs, weight that pays" Especially when each Kg is \$3.50.

Actual Scrotal: 38 cm Age: 17 months Purchaser: \$

January 2016 Angus Australia BREEDPLAN											
Angus	EBV	Birth Wt.	Milk	200 Wt.	400 Wt.	600 Wt.	Scrotal Size	Carcase Wt.	EMA	Rump Fat	IMF %
	Acc	5.5	15	47	90	119	2.2	66	0.6	-2.6	1.5
		72%	49%	67%	67%	65%	70%	56%	57%	59%	51%

Traits Observed: GL, CE, BWT, 200WT(x2), 400WT, SS, FAT, EMA, IMF

43 BANQUET KERMOND K168 (TW) HBR

Ident: VONK168 Tattoo: SNB K168 (T&F) Born: 7/08/2014 AMFU NHFU CAFU DDFU

BANQUET XTRA BELIEF X030 (AI)
 VONE007 BANQUET ENDEAVOUR E007 (AI) (ET)
 BANQUET KIWI DREAM (AI)

BANQUET BALLIS B017 (AI)
 VOND260 BANQUET NANNY D260
 BANQUET NANNY B131 (AI)

Kermond is the name of a Hamburger shop in Warrnambool. K168 certainly comes with the Lot! We pride ourselves with the temperament of our cattle. K168 takes it to a new level. He is soft coated, deep flanked and easy doing. He has excellent scrotal shape and a powerful head and jaw. We like him a lot. As we do with his dam, D260, she is long, fine fronted and deep. Her previous son sold for \$8,000.

Actual Scrotal: 41 cm Age: 18 months Purchaser: \$

January 2016 Angus Australia BREEDPLAN											
Angus	EBV	Birth Wt.	Milk	200 Wt.	400 Wt.	600 Wt.	Scrotal Size	Carcase Wt.	EMA	Rump Fat	IMF %
	Acc	5.9	12	40	73	100	2.4	48	2.9	-1.7	0.4
		70%	51%	61%	61%	61%	54%	52%	47%	48%	43%

Traits Observed: BWT, 200WT(x2), 400WT, SS, FAT, EMA, IMF

44 BANQUET KING K221 HBR

Ident: VONK221 Tattoo: SNB K221 (T&F) Born: 9/09/2014 AMFU NHFU CAFU DDFU

COONAMBLE Z3 (AI) (ET)
 VONF683 BANQUET FREDERICK F683 (AI) (ET)
 VERMONT DREAM B272 (AI) (ET)

BANQUET ENDRE E015 (AI)
 VONG379 BANQUET QUIET G379 (TW)
 BANQUET QUIET D003 (AI)

Hamish wanted this guy to be Lot 1. I wonder why? May be good enough but too young. We appreciate his powerful head and strong jaw. His overall ruggedness and dimension indicates he will breed heavy weaners.

Actual Scrotal: 39 cm Age: 17 months Purchaser: \$

January 2016 Angus Australia BREEDPLAN											
Angus	EBV	Birth Wt.	Milk	200 Wt.	400 Wt.	600 Wt.	Scrotal Size	Carcase Wt.	EMA	Rump Fat	IMF %
	Acc	5.6	10	43	77	109	1.4	57	4.7	-1.5	1.0
		70%	43%	64%	64%	61%	68%	52%	52%	53%	44%

Traits Observed: CE, BWT, 200WT(x2), 400WT, SS, FAT, EMA, IMF



LOT 44

45 BANQUET KELSEY K331 (AI) HBR

Ident: VONK331 Tattoo: SNB K331 (T&F) Born: 27/09/2014 AMFU NHFU CAFU DDFU

BANQUET DUNCAN D412 (AI)
VONG275 BANQUET GARTON G275
 BANQUET IRENE C417

BANQUET COLLECTIVE C351 (AI) (ET)
VONF435 BANQUET DREAM F435 (AI)
 BANQUET DREAM D384 (TW)

K331 is a deep bodied, easy doing bull. Just like his sire when he topped our 2013 sale at \$20,000 to Toora West. D384, grand dam of K331, was a donor at Banquet before her Sale last year for \$6,000.

Actual Scrotal: 37 cm Age: 16 months Purchaser: \$

January 2016 Angus Australia BREEDPLAN										
Angus	Birth Wt.	Milk	200 Wt.	400 Wt.	600 Wt.	Scrotal Size	Carcase Wt.	EMA	Rump Fat	IMF%
EBV	6.9	11	44	82	108	1.3	52	-0.7	1.1	1.7
Acc	70%	41%	63%	63%	60%	63%	51%	48%	50%	39%

Traits Observed:GL,CE,BWT,200WT(x2),400WT,SS,FAT,EMA,IMF



LOT 46

46 BANQUET KEAST K214 HBR

Ident: VONK214 Tattoo: SNB K214 (T&F) Born: 8/09/2014 AMFU NHFU CAFU DDFU

BANQUET XTRA BELIEF X030 (AI)
VONG464 BANQUET GRADUATE G464 (AI) (ET)
 BANQUET JULIE W164 (AI) (ET)

S CHISUM 6175
VONG243 BANQUET WIVEM G243 (AI)
 BANQUET WIVEM E221 (AI)

Another younger bull whose appearance matches his pedigree. K214 is sleek coated with softness and doing ability. He has a strong head and jaw and is deep and thick. Exactly what G464 over a Chisum daughter should be. G464 was on display at our female sale last year and was a crowd favourite.

Actual Scrotal: 42 cm Age: 17 months Purchaser: \$

January 2016 Angus Australia BREEDPLAN										
Angus	Birth Wt.	Milk	200 Wt.	400 Wt.	600 Wt.	Scrotal Size	Carcase Wt.	EMA	Rump Fat	IMF%
EBV	6.3	15	48	90	118	3.7	63	5.8	0.9	0.3
Acc	55%	44%	60%	62%	60%	68%	51%	50%	51%	43%

Traits Observed:CE,BWT,200WT(x2),400WT,SS,FAT,EMA,IMF

47 BANQUET KANIVA K341 (TW) HBR

Ident: VONK341 Tattoo: SNB K341 (T&F) Born: 29/09/2014 AMFU NHFU CAFU DDFU

COONAMBLE Z3 (AI) (ET)
VONF683 BANQUET FREDERICK F683 (AI) (ET)
 VERMONT DREAM B272 (AI) (ET)

B/R NEW FRONTIER 095
VONG533 BANQUET DREAM G533 (AI) (ET)
 BANQUET DREAM Q34 (AI) (ET)

The dam of K341, G533, has been identified as something special and she will join our donor team after this year. She is our last daughter of the hugely influential Dream Q34. This huge maternal value of K341 is enhanced with his muscularity, strength of spine and strong head and jaw. Keep his daughters and watch your herd improve.

Actual Scrotal: 41 cm Age: 16 months Purchaser: \$

January 2016 Angus Australia BREEDPLAN										
Angus	Birth Wt.	Milk	200 Wt.	400 Wt.	600 Wt.	Scrotal Size	Carcase Wt.	EMA	Rump Fat	IMF%
EBV	5.3	9.0	42	77	103	1.7	55	2.5	-1.6	1.9
Acc	70%	49%	62%	60%	59%	55%	52%	49%	49%	46%

Traits Observed:BWT,200WT(x2)



BANQUET GRADUATE G464 – SIRE OF LOT 46

48 BANQUET KLATTER K191 HBR

Ident: VONK191 Tattoo: SNB K191 (T&F) Born: 2/09/2014 AMFU NHFU CAFU DDFU

COONAMBLE Z3 (AI) (ET)
VONF683 BANQUET FREDERICK F683 (AI) (ET)
 VERMONT DREAM B272 (AI) (ET)

LT BANDWAGON 3105
VONG364 BANQUET RENE G364 (AI)
 BANQUET IRENE E411 (AI)

Want some extra volume in your calves? K191 will add that with extra muscularity and reduce their hair. Take time to appreciate that strength of his head and exceptional hooding over his eye. His dam, G364, is proving to be a top breeder. Her first son sold last year for \$8,000 to Jim Shaw. His sire, LT Bandwagon, was selected by Noleen during a USA trip. He is moderate framed with extra volume, thickness and mobility.

Actual Scrotal: 36 cm Age: 17 months Purchaser: \$

January 2016 Angus Australia BREEDPLAN										
Angus	Birth Wt.	Milk	200 Wt.	400 Wt.	600 Wt.	Scrotal Size	Carcase Wt.	EMA	Rump Fat	IMF%
EBV	3.9	14	44	80	107	1.2	61	4.7	-0.8	1.3
Acc	71%	44%	64%	61%	59%	50%	51%	43%	43%	39%

Traits Observed:CE,BWT,200WT(x2),400WT,SS,FAT,EMA,IMF

49 BANQUET KOORINGAL K188 HBR

Ident: VONK188 Tattoo: SNB K188 (T&F) Born: 1/09/2014 AMFU NHFU CAFU DDFU

COONAMBLE Z3 (AI) (ET)
 VONF683 BANQUET FREDERICK F683 (AI) (ET)
 VERMONT DREAM B272 (AI) (ET)

BANQUET CAPACITY C167 (AI)
 VONG317 BANQUET DREAM G317
 BANQUET DREAM V124 (AI) (ET)

These powerful headed, big hindquartered sons of F683 are very impressive. They're supported by outstanding cow families. The grand dam of K188 is one of those exceptional cows. Her sons have sold for \$21,000 to Robert Love, \$10,000 to Ozzie and Elaine Rentsch, \$9,000 to Toora West and \$6,000 to Steve Giblin.

Actual Scrotal: 38 cm Age: 17 months Purchaser: \$

January 2016 Angus Australia BREEDPLAN											
Angus	EBV	Birth Wt.	Milk	200 Wt.	400 Wt.	600 Wt.	Scrotal Size	Carcase Wt.	EMA	Rump Fat	IMF %
	Acc	5.4	9.0	45	73	107	0.6	55	3.6	-2.3	1.7
		71%	46%	66%	67%	63%	69%	54%	53%	55%	46%

Traits Observed:CE,BWT,200WT(x2),400WT,SS,FAT,EMA,IMF



LOT 49

50 BANQUET KURDEEZ K271 HBR

Ident: VONK271 Tattoo: SNB K271 (T&F) Born: 17/09/2014 AMFU NHFU CAFU DDFU

COONAMBLE Z3 (AI) (ET)
 VONF683 BANQUET FREDERICK F683 (AI) (ET)
 VERMONT DREAM B272 (AI) (ET)

GARRISON 8128 DYNAMITE
 VONG512 BANQUET DREAM G512 (AI) (ET)
 BANQUET YENDI P05

In the previous Lot, I referred to the maternal strength behind these very impressive F683 sons. K271 is another example of this. His grand dam, P05, has been an exceptional cow. She has nine daughters in our herd and her son, G442, has been retained. The P05 line is outstanding for longevity.

Actual Scrotal: 36 cm Age: 17 months Purchaser: \$

January 2016 Angus Australia BREEDPLAN											
Angus	EBV	Birth Wt.	Milk	200 Wt.	400 Wt.	600 Wt.	Scrotal Size	Carcase Wt.	EMA	Rump Fat	IMF %
	Acc	7.4	7.0	42	70	101	1.4	52	5.3	-1.6	0.7
		71%	48%	66%	66%	63%	69%	55%	54%	55%	47%

Traits Observed:CE,BWT,200WT(x2),400WT,SS,FAT,EMA,IMF

51 BANQUET KIMBA K313 HBR

Ident: VONK313 Tattoo: SNB K313 (T&F) Born: 22/09/2014 AMFU NHFU CAFU DDFU

COONAMBLE Z3 (AI) (ET)
 VONF683 BANQUET FREDERICK F683 (AI) (ET)
 VERMONT DREAM B272 (AI) (ET)

BANQUET CAPACITY C167 (AI)
 VONG329 BANQUET WIVEM G329
 BANQUET WIVEM C216

Like all these F683 sons K313 is clean skinned. Why do we value the hair and skin types so much? Fine skinned and soft coated cattle are easier doing, usually more fertile and always present better for sale. We think that is important.

Actual Scrotal: 35 cm Age: 17 months Purchaser: \$

January 2016 Angus Australia BREEDPLAN											
Angus	EBV	Birth Wt.	Milk	200 Wt.	400 Wt.	600 Wt.	Scrotal Size	Carcase Wt.	EMA	Rump Fat	IMF %
	Acc	6.8	10	41	68	99	-0.3	52	3.7	-1.5	1.2
		71%	45%	65%	67%	63%	69%	54%	52%	54%	44%

Traits Observed:CE,BWT,200WT(x2),400WT,SS,FAT,EMA,IMF

52 BANQUET KWINANA K281 (AI) HBR

Ident: VONK281 Tattoo: SNB K281 (T&F) Born: 19/09/2014 AMFU NHFU CAFU DDFU

WK REPLAY
 HBUF275 ANVIL FUSION F275 (AI) (ET)
 TE MANIA Y147 (AI)

BANQUET CROFT C080
 VONE566 BANQUET WIVEM E566
 BANQUET WIVEM B194 (AI)

If you are looking to add thickness and muscularity to your calves these sons of Fusion should feature on your list. Fortunately the Fusion daughters are functional, feminine and fertile. So a Fusion son will add weight and yield without compromising your cow herd.

Actual Scrotal: cm Age: months Purchaser: \$

January 2016 Angus Australia BREEDPLAN											
Angus	EBV	Birth Wt.	Milk	200 Wt.	400 Wt.	600 Wt.	Scrotal Size	Carcase Wt.	EMA	Rump Fat	IMF %
	Acc	3.9	18	42	85	109	3.0	58	4.6	-0.7	1.1
		71%	47%	65%	66%	63%	69%	54%	53%	55%	45%

Traits Observed:GL,CE,BWT,200WT(x2),400WT,SS,FAT,EMA,IMF

53 BANQUET KOL K178 HBR

Ident: VONK178 Tattoo: SNB K178 (T&F) Born: 22/08/2014 AMFU NHFU CAFU DDFU

BANQUET XTRA BELIEF X030 (AI)
 VONE007 BANQUET ENDEAVOUR E007 (AI) (ET)
 BANQUET KIWI DREAM (AI)

BANQUET ACCLAIMABULL A055 (AI) (ET)
 VONC216 BANQUET WIVEM C216
 BANQUET WIVEM W191 (AI) (ET)

Endeavour E007 was a long bodied, highly maternal sire. His daughters show great promise. K178 has his sires length and refinement. His daughters should be standouts.

Actual Scrotal: 41 cm Age: 18 months Purchaser: \$

January 2016 Angus Australia BREEDPLAN											
Angus	EBV	Birth Wt.	Milk	200 Wt.	400 Wt.	600 Wt.	Scrotal Size	Carcase Wt.	EMA	Rump Fat	IMF %
	Acc	6.0	13	34	57	78	1.5	38	2.3	-1.3	0.0
		72%	52%	66%	67%	65%	68%	56%	55%	57%	49%

Traits Observed:BWT,200WT(x2),400WT(x2),SS,FAT,EMA,IMF

CALVING EASE BULLS

LOT 54 to LOT 63

The next 10 bulls (Lots 54 to 63) have been especially selected for calving ease. They have ideal structure and are bred from calving ease genetics. Their birth weight EBV'S are low to moderate and several are first calving heifers. Other calving ease bulls are scattered throughout the catalogue.

54 BANQUET KARATE K262 HBR

Ident: VONK262 Tattoo: SNB K262 (T&F) Born: 15/09/2014 AMFU NHFU CAF DDFU

BRACKENFIELD RADAR
CBJW42 DYLEMMA RADAR W42 (AI) (ET)
BANQUET KITE T59 (AI) (ET)

BANQUET DAY DREAM D053 (AI) (ET)
VONH426 BANQUET DREAM H426
BANQUET DREAM E319

A strong headed, rugged and heavily muscled bull suitable for heifer joinings. Sounds like a contradiction! But with careful selection these sort of bulls can be produced. That is why we keep using the great Radar W42. In fact that is why we selected him for our AI sire for the commercial heifers offered in this Sale.

Actual Scrotal: 37 cm Age: 17 months Purchaser: \$

January 2016 Angus Australia BREEDPLAN											
Angus	EBV	Birth Wt.	Milk	200 Wt.	400 Wt.	600 Wt.	Scrotal Size	Carcase Wt.	EMA	Rump Fat	IMF%
	Acc	4.2	10	35	63	87	2.1	42	8.8	-2.7	-0.8
		72%	58%	68%	68%	66%	70%	60%	59%	60%	54%

Traits Observed:CE,BWT,200WT(x2),400WT,SS,FAT,EMA,IMF



BANQUET KITE T59 – GRAND DAM OF LOT 54

55 BANQUET KELLOGG K322 HBR

Ident: VONK322 Tattoo: SNB K322 (T&F) Born: 23/09/2014 AMFU NHFU CAFU DDFU

BANQUET DAY DREAM D053 (AI) (ET)
VONH411 BANQUET HUDSON H411
FORRES WILCOOLA D107

BANQUET BALLIS B017 (AI)
VONH459 BANQUET DREAM H459
BANQUET DREAM F385 (AI)

Another heifers first calf. He is a long bull with fine shoulders, ideal for maidens. He will pass on his generations of fine skin to make his calves even more attractive. They show great style and presence. We have retained his half brother.

Actual Scrotal: 42 cm Age: 17 months Purchaser: \$

January 2016 Angus Australia BREEDPLAN											
Angus	EBV	Birth Wt.	Milk	200 Wt.	400 Wt.	600 Wt.	Scrotal Size	Carcase Wt.	EMA	Rump Fat	IMF%
	Acc	4.1	17	43	80	106	4.1	54	1.6	0.2	1.2
		69%	42%	63%	64%	63%	68%	53%	51%	53%	42%

Traits Observed:CE,BWT,200WT(x2),400WT,SS,FAT,EMA,IMF



LOT 55

56 BANQUET KARIBOO K261 HBR

Ident: VONK261 Tattoo: SNB K261 (T&F) Born: 15/09/2014 AMFU NHFU CAFU DDFU

COONAMBLE Z3 (AI) (ET)
VONF683 BANQUET FREDERICK F683 (AI) (ET)
VERMONT DREAM B272 (AI) (ET)

LT BANDWAGON 3105
VONG367 BANQUET DREAM G367 (AI)
BANQUET DREAM E382 (AI)

K261 is a powerful calving ease bull. He is deep flanked and muscular. With a well hooded eye and shiny skin. Noleen inspected Bandwagon in the USA and selected him for his depth, volume and strong maternal pedigree. We expect his daughters, like G367, to be very valuable at Banquet.

Actual Scrotal: 39 cm Age: 17 months Purchaser: \$

January 2016 Angus Australia BREEDPLAN											
Angus	EBV	Birth Wt.	Milk	200 Wt.	400 Wt.	600 Wt.	Scrotal Size	Carcase Wt.	EMA	Rump Fat	IMF%
	Acc	3.8	16	43	81	109	1.9	59	2.6	0.5	1.5
		71%	44%	64%	64%	61%	67%	52%	51%	52%	43%

Traits Observed:CE,BWT,200WT(x2),400WT,SS,FAT,EMA,IMF

57 BANQUET KREPP K183 (AI) (TW) HBR

Ident: VONK183 Tattoo: SNB K183 (T&F) Born: 1/09/2014 AMFU NHFU CAFU DDFU

S A NEUTRON 377
 NGMD337 BOOROOMOOKA ASTRON D337 (AI)
 BOOROOMOOKA VOLITION X199 (AI) (ET)
 BANQUET ABODE A005 (AI)
 VONH301 BANQUET NANNY H301
 BANQUET NANNY D260

These sons of Astron will excell as calving ease sires. They will be earlier maturing with great skin types. K183 shows tremendous muscle expression. His maternal grandsire topped our Sale at \$20,000 when purchased by Forres Stud.

Actual Scrotal: 39 cm Age: 17 months Purchaser: \$

January 2016 Angus Australia BREEDPLAN										
Angus	Birth Wt.	Milk	200 Wt.	400 Wt.	600 Wt.	Scrotal Size	Carcase Wt.	EMA	Rump Fat	IMF%
EBV	3.6	18	43	78	109	2.5	60	3.5	1.0	1.5
Acc	66%	51%	61%	61%	60%	55%	54%	50%	50%	49%

Traits Observed: BWT,200WT(x2),400WT,SS,FAT,EMA,IMF

58 BANQUET KAMBA K203 (AI) HBR

Ident: VONK203 Tattoo: SNB K203 (T&F) Born: 5/09/2014 AMFU NHFU CAFU DDFU

S A NEUTRON 377
 NGMD337 BOOROOMOOKA ASTRON D337 (AI)
 BOOROOMOOKA VOLITION X199 (AI) (ET)
 BANQUET DAY DREAM D053 (AI) (ET)
 VONH381 BANQUET VICKY H381
 BANQUET VICKY C302

K203 is longer and even finer fronted than his brothers. We admire his fine, soft skin. His dam is a daughter of the mighty Day Dream D053. D053 daughters are exceptionally sound and functional. Their progeny are so pleasing we used D053 very heavily for this spring calving.

Actual Scrotal: 38 cm Age: 17 months Purchaser: \$

January 2016 Angus Australia BREEDPLAN										
Angus	Birth Wt.	Milk	200 Wt.	400 Wt.	600 Wt.	Scrotal Size	Carcase Wt.	EMA	Rump Fat	IMF%
EBV	5.7	16	43	75	103	2.1	57	5.0	2.1	1.2
Acc	72%	52%	67%	68%	65%	70%	58%	57%	58%	52%

Traits Observed: GL,CE,BWT,200WT(x2),400WT,SS,FAT,EMA,IMF

59 BANQUET KYLE K119 HBR

Ident: VONK119 Tattoo: SNB K119 (T&F) Born: 12/06/2014 AMFU NHFU CAFU DDFU

S A NEUTRON 377
 NGMD337 BOOROOMOOKA ASTRON D337 (AI)
 BOOROOMOOKA VOLITION X199 (AI) (ET)
 BANQUET ZEALFUL Z021
 VOND342 BANQUET SUNBEAM D342 (AI)
 BANQUET SUNBEAM B244 (AI)

K119 is very fine skinned. Don't confuse all short hair as fine skinned or softness. Some short haired cattle have course hair and thick hides. This is less desirable. The soft haired, fine skinned cattle are easier doing and polish up quicker after winter.

Actual Scrotal: 43 cm Age: 20 months Purchaser: \$

January 2016 Angus Australia BREEDPLAN										
Angus	Birth Wt.	Milk	200 Wt.	400 Wt.	600 Wt.	Scrotal Size	Carcase Wt.	EMA	Rump Fat	IMF%
EBV	3.0	15	38	64	86	1.7	48	3.3	2.3	1.4
Acc	74%	55%	68%	69%	71%	58%	60%	58%	59%	53%

Traits Observed: BWT,200WT,400WT,600WT,FAT,EMA,IMF

60 BANQUET KEN K139 HBR

Ident: VONK139 Tattoo: SNB K139 (T&F) Born: 29/06/2014 AMFU NHFU CAFU DDFU

S A NEUTRON 377
 NGMD337 BOOROOMOOKA ASTRON D337 (AI)
 BOOROOMOOKA VOLITION X199 (AI) (ET)
 BT RIGHT TIME 24J
 VONC359 BANQUET QUIET C359 (AI) (ET)
 BANQUET QUIET Y091 (AI)

K139 is a thick, early maturing soft and fine skinned bull. I referred to soft skins in the previous lot. K139 has three generations of these type of sires. D337, 24J and Radar W42, softness, muscle and thickness.

Actual Scrotal: 37 cm Age: 19 months Purchaser: \$

January 2016 Angus Australia BREEDPLAN										
Angus	Birth Wt.	Milk	200 Wt.	400 Wt.	600 Wt.	Scrotal Size	Carcase Wt.	EMA	Rump Fat	IMF%
EBV	2.2	21	31	63	84	1.4	47	5.7	1.4	1.2
Acc	65%	57%	68%	70%	72%	72%	61%	60%	62%	56%

Traits Observed: 200WT,400WT(x2),600WT,SS,FAT,EMA,IMF

61 BANQUET KEANE K299 HBR

Ident: VONK299 Tattoo: SNB K299 (T&F) Born: 20/09/2014 AMFU NHFU CAFU DDFU

S A NEUTRON 377
 NGMD337 BOOROOMOOKA ASTRON D337 (AI)
 BOOROOMOOKA VOLITION X199 (AI) (ET)
 BANQUET ARROGANCE V100 (AI)
 VONZ146 BANQUET QUIET Z146 (AI) (ET)
 GV QUIET Q15 (AI) (ET)

The extra growth and length of Z146 has combined with D337 to give a calving ease bull with more performance. K299 has the sleek skin and lower birth from D337. His extra length of body and refinement through his shoulders has come from Z146. Sometimes these "fire and ice" joinings can result in a refreshing, cool drink.

Actual Scrotal: 37 cm Age: 17 months Purchaser: \$

January 2016 Angus Australia BREEDPLAN										
Angus	Birth Wt.	Milk	200 Wt.	400 Wt.	600 Wt.	Scrotal Size	Carcase Wt.	EMA	Rump Fat	IMF%
EBV	4.5	16	42	78	102	2.3	57	3.7	1.1	1.5
Acc	70%	58%	68%	68%	66%	69%	60%	59%	60%	55%

Traits Observed: CE,BWT,200WT(x2),400WT,SS,FAT,EMA,IMF

62 BANQUET KAPOOKA K305 (AI) HBR

Ident: VONK305 Tattoo: SNB K305 (T&F) Born: 22/09/2014 AMFU NHFU CAFU DDFU

S A NEUTRON 377
 NGMD337 BOOROOMOOKA ASTRON D337 (AI)
 BOOROOMOOKA VOLITION X199 (AI) (ET)
 BANQUET DUNCAN D412 (AI)
 VONG320 BANQUET IRENE G320
 BANQUET IRENE A317

We love the power in our Duncan D412 cows. G320 is a great example. Extra bone, volume and most importantly width of hip to pin. K305 shows this extra volume and muscularity. He is a very young spring drop bull.

Actual Scrotal: 39 cm Age: 17 months Purchaser: \$

January 2016 Angus Australia BREEDPLAN										
Angus	Birth Wt.	Milk	200 Wt.	400 Wt.	600 Wt.	Scrotal Size	Carcase Wt.	EMA	Rump Fat	IMF%
EBV	4.7	14	41	73	104	2.4	54	1.0	2.0	1.8
Acc	72%	53%	68%	69%	66%	71%	59%	58%	60%	53%

Traits Observed: GL,CE,BWT,200WT(x2),400WT,SS,FAT,EMA,IMF



LOT 63

63 BANQUET KAVANAGH K296 HBR

Ident: VONK296 Tattoo: SNB K296 (T&F) Born: 20/09/2014 AMFU NHFU CAFU DDFU

BANQUET DAY DREAM D053 (AI) (ET)
VONH411 BANQUET HUDSON H411
 FORRES WILCOOLA D107
 BANQUET ELECTRIC E839
VONH688 BANQUET PRIDE H688
 BANQUET PRIDE E394 (AI)

K296 is a little higher in the birth weight EBV but when you are born unassisted at 31kg from a maiden, I think you should be a calving ease sire. K296 is a clean skinned bull with great body length. He is long necked and fine shouldered which is ideal for calving ease.

Actual Scrotal: 39 cm Age: 17 months Purchaser: \$

January 2016 Angus Australia BREEDPLAN											
Angus	EBV	Birth Wt.	Milk	200 Wt.	400 Wt.	600 Wt.	Scrotal Size	Carcase Wt.	EMA	Rump Fat	IMF%
	Acc	5.1	14	41	79	108	3.7	53	3.2	-0.7	0.5
		68%	40%	63%	64%	62%	68%	52%	50%	52%	41%

Traits Observed:CE,BWT,200WT(x2),400WT,SS,FAT,EMA,IMF

64 BANQUET KENWICK K326 (AI) (ET) HBR

Ident: VONK326 Tattoo: SNB K326 (T&F) Born: 24/09/2014 AMFU NHFU CAFU DDFU

S A F 598 BANDO 5175
VONA005 BANQUET ABODE A005 (AI)
 BANQUET NANNY V44
 BANQUET ABRAHAM A204 (AI) (ET)
VOND381 BANQUET DREAM D381 (AI)
 BANQUET DREAM X083 (AI) (ET)

K326 has enormous potential. He is long and powerful with extra growth and muscularity. K326 has a great skin and outlook. The style and presence of this young sire place him in the elite company. Could be our best son of Abode. A big call given how well H279 is breeding. Abode topped our 2007 sale at \$20,000 to Forres Stud. With Shingle Hut and Quarterway Angus we repurchased him at the Forres Dispersal for \$22,000. The grandsire of K326 sold to Wittalocka Stud for \$16,000. D381, dam of K326, was selected by Heath Tiller at our Belles of Banquet Sale for \$9,000. Semen Retained.

Actual Scrotal: 38 cm Age: 17 months Purchaser: \$

January 2016 Angus Australia BREEDPLAN											
Angus	EBV	Birth Wt.	Milk	200 Wt.	400 Wt.	600 Wt.	Scrotal Size	Carcase Wt.	EMA	Rump Fat	IMF%
	Acc	5.9	19	48	90	119	2.5	64	5.5	-0.8	1.0
		73%	58%	68%	67%	66%	66%	58%	57%	58%	52%

Traits Observed:BWT,200WT(x2),400WT,SS,FAT,EMA,IMF

65 BANQUET KALGOORLIE K241 HBR

Ident: VONK241 Tattoo: SNB K241 (T&F) Born: 12/09/2014 AMFU NHFU CAFU DDFU

COONAMBLE Z3 (AI) (ET)
VONF683 BANQUET FREDERICK F683 (AI) (ET)
 VERMONT DREAM B272 (AI) (ET)
 COONAMBLE Z3 (AI) (ET)
VONG496 BANQUET BLACKBIRD G496 (AI) (ET)
 VERMONT BLACKBIRD X187 (AI) (ET)

K241 is the combination of two Vermont embryos. F683 is proving a top sire for us. He was purchased by Barry Pitt. The grand dam of K241, Blackbird X187, was a top daughter of 469 we bid to \$20,000 to try and purchase. Our fall back position was to purchase her embryos sired by Z3. A good decision.

Actual Scrotal: 37 cm Age: 17 months Purchaser: \$

January 2016 Angus Australia BREEDPLAN											
Angus	EBV	Birth Wt.	Milk	200 Wt.	400 Wt.	600 Wt.	Scrotal Size	Carcase Wt.	EMA	Rump Fat	IMF%
	Acc	4.6	9.0	44	79	111	1.6	62	6.0	-0.3	0.8
		73%	49%	68%	68%	65%	71%	57%	57%	58%	50%

Traits Observed:CE,BWT,200WT(x2),400WT,SS,FAT,EMA,IMF

66 BANQUET KOJONUP K230 HBR

Ident: VONK230 Tattoo: SNB K230 (T&F) Born: 10/09/2014 AMFU NHFU CAFU DDFU

COONAMBLE Z3 (AI) (ET)
VONF683 BANQUET FREDERICK F683 (AI) (ET)
 VERMONT DREAM B272 (AI) (ET)
 BANQUET EZZA KIWI E214 (AI) (ET)
VONG223 BANQUET DREAM G223 (AI)
 BANQUET DREAM E205 (AI)

Another long, strong topped son of F683. K230 is from a daughter of Ezza Kiwi E214. E214 was produced from an embryo imported from N.Z. We used him before sale to Chris & Geoff Roberts for \$10,000. He produced a son, G065, who we used before selling him to Wimmera Downs. G065 is the sire of Lots 1, 16, 17, 91 & 92. The great grand dam of K230 is Dream A356, she produced Jupiter J263, who topped our 2015 sale at \$40,000.

Actual Scrotal: 37 cm Age: 17 months Purchaser: \$

January 2016 Angus Australia BREEDPLAN											
Angus	EBV	Birth Wt.	Milk	200 Wt.	400 Wt.	600 Wt.	Scrotal Size	Carcase Wt.	EMA	Rump Fat	IMF%
	Acc	6.4	9.0	45	81	113	1.3	60	3.8	-1.7	0.9
		71%	43%	65%	66%	62%	69%	53%	52%	54%	44%

Traits Observed:CE,BWT,200WT(x2),400WT,SS,FAT,EMA,IMF

67 BANQUET KEMPTON K301 (AI) HBR

Ident: VONK301 Tattoo: SNB K301 (T&F) Born: 22/09/2014 AMFU NHFU CAFU DDFU

BANQUET OVER LIMIT Y035 (AI) (ET)
VONA349 BANQUET ABERDEEN A349
 BANQUET VICKY X109
 BANQUET BELEIF A387 (AI)
VONF472 BANQUET NANNY F472
 BANQUET NANNY Y200 (AI)

K301 is a big, powerful bull with great mobility. He is strong topped and muscular with a strong head. The extra weight that he will produce times by \$3 something equals a lot of extra dollars. His sons will make awesome bullocks and his daughters superb cows. A349 had the top sire group of cows in our Belles of Banquet Sale. They sold to \$27,000.

Actual Scrotal: 40 cm Age: 17 months Purchaser: \$

January 2016 Angus Australia BREEDPLAN											
Angus	EBV	Birth Wt.	Milk	200 Wt.	400 Wt.	600 Wt.	Scrotal Size	Carcase Wt.	EMA	Rump Fat	IMF%
	Acc	8.3	6.0	39	67	90	1.2	46	3.8	-1.6	0.6
		71%	53%	67%	68%	65%	70%	56%	55%	56%	46%

Traits Observed:GL,CE,BWT,200WT(x2),400WT,SS,FAT,EMA,IMF

68 BANQUET KELLY K253 HBR

Ident: VONK253 Tattoo: SNB K253 (T&F) Born: 13/09/2014 AMFU NHFU CAFU DD50%

BANQUET DAY DREAM D053 (AI) (ET)
VONH411 BANQUET HUDSON H411
 FORRES WILCOOLA D107

S CHISUM 6175
VONH505 BANQUET QUIET H505 (AI) (ET)
 BANQUET QUIET A172 (AI)

K253 is a long, clean skinned bull with a strong top. Being from a maiden heifer he could have been in the calving ease pen. His 2 year old dam has another good calf this year. She is one of our first Chisum daughters. Noleen was very impressed with Chisum. He is a strong headed bull with tremendous volume.

Actual Scrotal: 36 cm Age: 17 months Purchaser: \$

January 2016 Angus Australia BREEDPLAN										
Angus	Birth Wt.	Milk	200 Wt.	400 Wt.	600 Wt.	Scrotal Size	Carcase Wt.	EMA	Rump Fat	IMF%
EBV	5.0	16	45	83	109	3.3	60	3.2	0.1	0.6
Acc	68%	41%	57%	55%	57%	49%	47%	42%	43%	38%

Traits Observed:CE,BWT

69 BANQUET KANIMBLA K307 (AI) HBR

Ident: VONK307 Tattoo: SNB K307 (T&F) Born: 22/09/2014 AMFU NHFU CAFU DDFU

BANQUET DAY DREAM D053 (AI) (ET)
VONF485 BANQUET FORBIDABULL F485 (AI) (ET)
 BANQUET DREAM W173 (AI) (ET)

BANQUET BALLIS B017 (AI)
VONF452 BANQUET IRENE F452 (AI)
 BANQUET IRENE D402 (AI)

The outstanding hindquarter structure of K307 impresses on first inspection. Not surprisingly he is by Forbidabull F485. F485 was our top price bull in 2012 when purchased by Onslow for \$26,000. He sired the top priced bulls for Onslow and Banquet in 2015.

Actual Scrotal: 36 cm Age: 17 months Purchaser: \$

January 2016 Angus Australia BREEDPLAN										
Angus	Birth Wt.	Milk	200 Wt.	400 Wt.	600 Wt.	Scrotal Size	Carcase Wt.	EMA	Rump Fat	IMF%
EBV	6.8	11	46	83	114	1.9	56	5.6	-2.8	1.0
Acc	73%	47%	68%	68%	66%	71%	56%	56%	57%	48%

Traits Observed:GL,CE,BWT,200WT(x2),400WT,SS,FAT,EMA,IMF

70 BANQUET KINGSTON K213 (AI) (ET) HBR

Ident: VONK213 Tattoo: SNB K213 (T&F) Born: 8/09/2014 AMFU NHFU CAFU DDF

BT EQUATOR 395M
NMMD78 MILLAH MURRAH EQUATOR D78 (AI)
 MILLAH MURRAH RADO Y119 (AI)

BANQUET TIME FRAME Y135 (AI) (ET)
VONA250 BANQUET DREAM A250
 BANQUET DREAM V109 (AI) (ET)

What a powerful bull K213 is. Long bodied and muscular. He is from one of our special cows, Dream A250. She also bred Duncan D412 who has bred sale topping sons to \$20,000 and outstanding power cows. Flush brother to Lots 39 & 40.

Actual Scrotal: 36 cm Age: 17 months Purchaser: \$

January 2016 Angus Australia BREEDPLAN										
Angus	Birth Wt.	Milk	200 Wt.	400 Wt.	600 Wt.	Scrotal Size	Carcase Wt.	EMA	Rump Fat	IMF%
EBV	5.0	15	51	91	128	1.3	66	3.7	-1.5	0.9
Acc	74%	61%	70%	70%	69%	71%	62%	62%	63%	58%

Traits Observed:BWT,200WT(x2),400WT,SS,FAT,EMA,IMF

71 BANQUET KNOWLES K175 (AI) (ET) HBR

Ident: VONK175 Tattoo: SNB K175 (T&F) Born: 17/08/2014 AMFU NHFU CAFU DDFU

BT EQUATOR 395M
NMMD78 MILLAH MURRAH EQUATOR D78 (AI)
 MILLAH MURRAH RADO Y119 (AI)

HINGAIA 469 (AI)
VONV177 BANQUET DREAM V177 (AI) (ET)
 BANQUET DREAM Q117 (AI)

Another long bodied and shiny coated D78 son. This time from another Dream matron, V177. V177 is from one of our most successful flushes. She had 8 flush brothers to average \$7875 in 2002 and 6 flush sisters bred at Banquet. V177 is a half sister to Vermont Dream Y301, Vermonts greatest cow. The first calf from V177 sold to Onslow for \$9,000. Other sons sold for \$7,500 and \$6,500.

Actual Scrotal: 42 cm Age: 18 months Purchaser: \$

January 2016 Angus Australia BREEDPLAN										
Angus	Birth Wt.	Milk	200 Wt.	400 Wt.	600 Wt.	Scrotal Size	Carcase Wt.	EMA	Rump Fat	IMF%
EBV	3.3	18	45	84	121	2.9	59	3.5	-0.2	0.0
Acc	74%	62%	69%	70%	68%	71%	62%	61%	62%	58%

Traits Observed:BWT,200WT(x2),400WT,SS,FAT,EMA,IMF



LOT 72

72 BANQUET KATOOMBA K312 (AI) HBR

Ident: VONK312 Tattoo: SNB K312 (T&F) Born: 22/09/2014 AMFU NHFU CAFU DDFU

WK REPLAY
HBUF275 ANVIL FUSION F275 (AI) (ET)
 TE MANIA Y147 (AI)

BANQUET TIME FRAME Y135 (AI) (ET)
VOND332 BANQUET DREAM D332 (AI)
 BANQUET DREAM B239 (AI)

When we were drafting this group of bulls, K312 passed by and Hamish exclaimed "muscle, muscle, muscle" I don't think he is triple, or even doubled muscled. But he could be mistaken for a Euro. By the Anvil Fusion who is breeding well. A very astute Doug Robertson "stole" the dam of K312 at our Belles of Banquet Sale. Well Done Doug.

Actual Scrotal: 37 cm Age: 17 months Purchaser: \$

January 2016 Angus Australia BREEDPLAN										
Angus	Birth Wt.	Milk	200 Wt.	400 Wt.	600 Wt.	Scrotal Size	Carcase Wt.	EMA	Rump Fat	IMF%
EBV	5.1	16	46	87	114	2.7	59	4.1	0.2	1.8
Acc	72%	48%	65%	66%	63%	69%	55%	55%	56%	48%

Traits Observed:GL,CE,BWT,200WT(x2),400WT,SS,FAT,EMA,IMF



LOT 73

73 BANQUET KULGERA K308 (AI) HBR

Ident: VONK308 Tattoo: SNB K308 (T&F) Born: 22/09/2014 AMFU NHFU CAFU DDFU

WK REPLAY
HBUF275 ANVIL FUSION F275 (AI) (ET)
 TE MANIA Y147 (AI)

BANQUET ZEALFUL Z021
VOND250 BANQUET DREAM D250 (AI)
 BANQUET DREAM B151 (AI)

Another Fusion son. A shiny, soft skinned muscle bull that is very easy doing. His dam "went to greener pastures" when he was only 10 days old. K308 became Noleen's special baby. He was certainly worth the milk powder.

Actual Scrotal: 37 cm Age: 17 months Purchaser: \$

January 2016 Angus Australia BREEDPLAN											
Angus	EBV	Birth Wt.	Milk	200 Wt.	400 Wt.	600 Wt.	Scrotal Size	Carcase Wt.	EMA	Rump Fat	IMF%
	Acc	4.7	14	46	84	105	2.3	58	3.9	-0.4	1.6
		67%	47%	62%	60%	59%	53%	51%	45%	47%	42%

Traits Observed:GL,CE,BWT,200WT(x2),400WT,SS,FAT,EMA,IMF



BANQUET ZEALFUL Z021 – GRAND SIRE OF LOT 73

74 BANQUET KALMAN K257 HBR

Ident: VONK257 Tattoo: SNB K257 (T&F) Born: 13/09/2014 AMFU NHFU CAF DDFU

COONAMBLE Z3 (AI) (ET)
VONF683 BANQUET FREDERICK F683 (AI) (ET)
 VERMONT DREAM B272 (AI) (ET)

BANQUET ENDRE E015 (AI)
VONG531 BANQUET JEDDA G531
 VERMONT JEDDA Z209 (AI) (ET)

K257 is a typical son of F683. He is heavy boned and very muscular. He is strong headed with a strong jaw and a well hooded eye. His grandsire E015, was used heavily as a calving ease sire before going to Fernleigh Stud.

Actual Scrotal: 36 cm Age: 17 months Purchaser: \$

January 2016 Angus Australia BREEDPLAN											
Angus	EBV	Birth Wt.	Milk	200 Wt.	400 Wt.	600 Wt.	Scrotal Size	Carcase Wt.	EMA	Rump Fat	IMF%
	Acc	5.3	13	42	79	108	2.1	57	3.0	-0.4	1.0
		71%	44%	65%	64%	61%	66%	52%	50%	52%	44%

Traits Observed:CE,BWT,200WT(x2),400WT,SS,FAT,EMA,IMF



LOT 75

75 BANQUET KARLINSKI K293 HBR

Ident: VONK293 Tattoo: SNB K293 (T&F) Born: 20/09/2014 AMFU NHFU CAFU DDFU

COONAMBLE Z3 (AI) (ET)
VONF683 BANQUET FREDERICK F683 (AI) (ET)
 VERMONT DREAM B272 (AI) (ET)

BANQUET COBEE C084
VONG447 BANQUET QUIET G447
 BANQUET QUIET D348 (AI)

K293 is a super skinned bull with extra depth and softness. His grandsire, C084, was an outstanding sire at Toora West and Banquet. His daughters are thick, deep and easy doing.

Actual Scrotal: 37 cm Age: 17 months Purchaser: \$

January 2016 Angus Australia BREEDPLAN											
Angus	EBV	Birth Wt.	Milk	200 Wt.	400 Wt.	600 Wt.	Scrotal Size	Carcase Wt.	EMA	Rump Fat	IMF%
	Acc	4.0	14	41	76	101	2.1	57	5.6	0.2	1.4
		71%	45%	65%	66%	62%	69%	53%	53%	55%	45%

Traits Observed:CE,BWT,200WT(x2),400WT,SS,FAT,EMA,IMF

76 BANQUET KAMONA K210 HBR

Ident: VONK210 Tattoo: SNB K210 (T&F) Born: 8/09/2014 AMFU NHFU CAFU DDFU

COONAMBLE Z3 (AI) (ET)
 VONF683 BANQUET FREDERICK F683 (AI) (ET)
 VERMONT DREAM B272 (AI) (ET)

BANQUET DAY DREAM D053 (AI) (ET)
 VONG468 BANQUET MARTINA G468 (AI) (ET)
 VERMONT MARTINA W182 (AI) (ET)

An exceptionally strong dam line has produced K210. His dam is a D053 daughter of W182. W182 was a donor of enormous volume. Her son topped our Spring Sale at \$13,000. K210 is a strong headed bull with bone and grunt.

Actual Scrotal: 37 cm Age: 17 months Purchaser: \$

January 2016 Angus Australia BREEDPLAN											
Angus	EBV	Birth Wt.	Milk	200 Wt.	400 Wt.	600 Wt.	Scrotal Size	Carcase Wt.	EMA	Rump Fat	IMF%
	Acc	6.2	11	46	83	114	1.8	62	6.5	-1.6	0.9
		72%	47%	66%	67%	63%	70%	55%	55%	56%	47%

Traits Observed:CE,BWT,200WT(x2),400WT,SS,FAT,EMA,IMF



LOT 76

77 BANQUET KNIGHT K284 HBR

Ident: VONK284 Tattoo: SNB K284 (T&F) Born: 19/09/2014 AMFU NHFU CAFU DDFU

COONAMBLE Z3 (AI) (ET)
 VONF683 BANQUET FREDERICK F683 (AI) (ET)
 VERMONT DREAM B272 (AI) (ET)

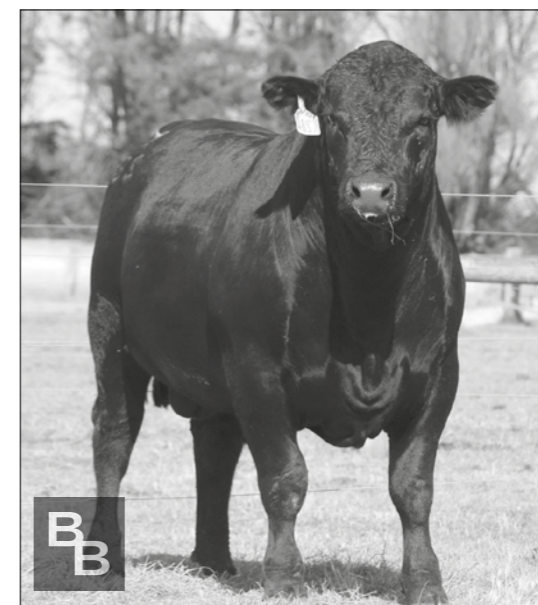
BANQUET COBEE C084
 VONG446 BANQUET QUIET G446
 BANQUET QUIET D218 (AI)

Breeding, as in the careful selection of individuals to produce a product with particular traits, is a challenging vocation. When it works it is rewarding. When you like what is produced it is exciting. K284 is in this exciting group. Combining F683 and C084 has produced a long and deep bodied bull with extra muscularity and a wide hindquarter.

Actual Scrotal: 41 cm Age: 17 months Purchaser: \$

January 2016 Angus Australia BREEDPLAN											
Angus	EBV	Birth Wt.	Milk	200 Wt.	400 Wt.	600 Wt.	Scrotal Size	Carcase Wt.	EMA	Rump Fat	IMF%
	Acc	5.8	12	46	84	114	3	63	5.4	0.0	1.3
		70%	44%	65%	66%	62%	68%	53%	52%	53%	43%

Traits Observed:CE,BWT,200WT(x2),400WT,SS,FAT,EMA,IMF



LOT 77

78 BANQUET KELLY K238 HBR

Ident: VONK238 Tattoo: SNB K238 (T&F) Born: 12/09/2014 AMFU NHFU CAFU DDFU

COONAMBLE Z3 (AI) (ET)
 VONF683 BANQUET FREDERICK F683 (AI) (ET)
 VERMONT DREAM B272 (AI) (ET)

BANQUET DAY DREAM D053 (AI) (ET)
 VONG323 BANQUET LUCY G323
 BANQUET LUCY Z271 (AI) (ET)

K238 is a thick, deep flanked bull with lots of volume. This is what he will add to your program. Why am I so confident? Because it is in his pedigree. Frederick F683 over a daughter of Day Dream D053 over a daughter of Arrogance V100. Simple really! Bulls without a strong pedigree rarely replicate their strengths.

Actual Scrotal: 39 cm Age: 17 months Purchaser: \$

January 2016 Angus Australia BREEDPLAN											
Angus	EBV	Birth Wt.	Milk	200 Wt.	400 Wt.	600 Wt.	Scrotal Size	Carcase Wt.	EMA	Rump Fat	IMF%
	Acc	3.5	12	36	69	94	2.4	50	6.8	-0.7	0.8
		71%	46%	65%	66%	62%	66%	54%	52%	53%	45%

Traits Observed:CE,BWT,200WT(x2),400WT,SS,FAT,EMA,IMF

79 BANQUET KOALA K222 HBR

Ident: VONK222 Tattoo: SNB K222 (T&F) Born: 10/09/2014 AMFU NHFU CAFU DDFU

COONAMBLE Z3 (AI) (ET)
 VONF683 BANQUET FREDERICK F683 (AI) (ET)
 VERMONT DREAM B272 (AI) (ET)

BANQUET XPERIENCE X174
 VONZ283 BANQUET WIVEM Z283
 BANQUET WIVEM X337

K222 has a strong top line which shows extra width of loin and expression of the jump muscle. All this power is wrapped up in a silky, clean skin. X174 was the first calf from V112 and we used him as a yearling before he was purchased by Mt Fyans for \$10,000.

Actual Scrotal: 35 cm Age: 17 months Purchaser: \$

January 2016 Angus Australia BREEDPLAN											
Angus	EBV	Birth Wt.	Milk	200 Wt.	400 Wt.	600 Wt.	Scrotal Size	Carcase Wt.	EMA	Rump Fat	IMF%
	Acc	4.5	10	36	65	88	0.6	47	3.0	-1.1	1.4
		72%	49%	64%	61%	60%	50%	51%	43%	44%	39%

Traits Observed:CE,BWT,200WT(x2),400WT,SS,FAT,EMA,IMF

80 BANQUET KANIVA K209 HBR

Ident: VONK209 Tattoo: SNB K209 (T&F) Born: 8/09/2014 AMFU NHFU CAFU DDFU

COONAMBLE Z3 (AI) (ET)
 VONF683 BANQUET FREDERICK F683 (AI) (ET)
 VERMONT DREAM B272 (AI) (ET)

BANQUET DAY DREAM D053 (AI) (ET)
 VONG315 BANQUET DREAM G315 (TW)
 BANQUET DREAM U54 (AI) (ET)

These sons of F683 are so consistent in their traits. They are long with extra muscle content. This means more weight and yield. When all the bases of structure and temperament are right, weight and yield is where the next improvement lies. Dream U54, the grandmother of K209, produced sons selling to \$8,000. Her flush brothers sold to \$22,000 to Jumbuck Park and \$21,000 to Toora West.

Actual Scrotal: 36 cm Age: 17 months Purchaser: \$

January 2016 Angus Australia BREEDPLAN										
Angus	Birth Wt.	Milk	200 Wt.	400 Wt.	600 Wt.	Scrotal Size	Carcase Wt.	EMA	Rump Fat	IMF%
EBV	5.9	11	41	74	101	1.4	54	3.1	-0.9	1.4
Acc	71%	47%	65%	66%	63%	68%	54%	53%	55%	46%

Traits Observed:CE,BWT,200WT(x2),400WT,SS,FAT,EMA,IMF



LOT 80

81 BANQUET KARATTA K236 (TW) HBR

Ident: VONK236 Tattoo: SNB K236 (T&F) Born: 12/09/2014 AMFU NHFU CAFU DDFU

COONAMBLE Z3 (AI) (ET)
 VONF683 BANQUET FREDERICK F683 (AI) (ET)
 VERMONT DREAM B272 (AI) (ET)

HINGAIA 469 (AI)
 VONW156 BANQUET JULIE W156 (AI) (ET)
 ABBARINGA JULIE L10+91 (AI)

Karatta was the name of the old boat that sailed to Kangaroo Island. It was legendary for how rough it was sailing through Backstairs Passage. I am sure K236 will give you much smoother sailing. With his strong bow, wide deck and thick stern. His progeny will fill lots of containers. His dam, W156, produced fifteen calves in eleven years. She is a flush sister to one of our most prized donors, W164.

Actual Scrotal: 36 cm Age: 17 months Purchaser: \$

January 2016 Angus Australia BREEDPLAN										
Angus	Birth Wt.	Milk	200 Wt.	400 Wt.	600 Wt.	Scrotal Size	Carcase Wt.	EMA	Rump Fat	IMF%
EBV	3.6	13	35	73	99	1.2	51	2.8	-1.0	1.6
Acc	71%	50%	62%	61%	61%	55%	52%	49%	50%	46%

Traits Observed:BWT,200WT(x2),400WT,SS,FAT,EMA,IMF

82 BANQUET KAPUNDA K304 (AI) HBR

Ident: VONK304 Tattoo: SNB K304 (T&F) Born: 22/09/2014 AMFU NHFU CAFU DDFU

COONAMBLE Z3 (AI) (ET)
 VONF683 BANQUET FREDERICK F683 (AI) (ET)
 VERMONT DREAM B272 (AI) (ET)

BANQUET BALLIS B017 (AI)
 VOND267 BANQUET DREAM D267
 BANQUET DREAM A301

Our South Australian friends will know where Kapunda is. Unlike so many areas that I grew up in, Kapunda was spared by the tragic fires of late November 2015. It is our wish that Kapunda K304 proves a survivor as well. His half brothers have sold for \$5,000 and \$6,000.

Actual Scrotal: 38 cm Age: 17 months Purchaser: \$

January 2016 Angus Australia BREEDPLAN										
Angus	Birth Wt.	Milk	200 Wt.	400 Wt.	600 Wt.	Scrotal Size	Carcase Wt.	EMA	Rump Fat	IMF%
EBV	4.8	11	41	77	104	1.7	55	2.0	-0.8	2.1
Acc	73%	48%	67%	68%	64%	70%	55%	55%	56%	47%

Traits Observed:GL,CE,BWT,200WT(x2),400WT,SS,FAT,EMA,IMF

83 BANQUET KENYA K286 (AI) HBR

Ident: VONK286 Tattoo: SNB K286 (T&F) Born: 19/09/2014 AMFU NHFU CAFU DDFU

BANQUET ARROGANCE V100 (AI)
 VONZ137 BANQUET ZENITH Z137 (AI) (ET)
 GV QUIET Q15 (AI) (ET)

DUNOON MIDLAND A017 (AI) (ET)
 VONE232 BANQUET ECLYPTA E232 (AI)
 BANQUET ECLYPTA C220

This is the only Zenith Z137 son in the Sale. We re-introduced Z137 to our program based on the performance of his three full sisters, who all bred until 11 years old. Z137 was Grand Champion at Melbourne Royal and sold for \$10,000 to Anvil Stud. We have retained a Z137 son.

Actual Scrotal: 35 cm Age: 17 months Purchaser: \$

January 2016 Angus Australia BREEDPLAN										
Angus	Birth Wt.	Milk	200 Wt.	400 Wt.	600 Wt.	Scrotal Size	Carcase Wt.	EMA	Rump Fat	IMF%
EBV	5.1	10	37	67	83	1.6	45	3.0	-0.3	0.5
Acc	71%	50%	63%	59%	59%	47%	51%	43%	45%	42%

Traits Observed:GL,CE,BWT,200WT(x2),400WT,SS,FAT,EMA,IMF



BANQUET ZENITH Z137 – SIRE OF LOT 83



LOT 84

84 BANQUET KYOGLE K344 (AI) HBR

Ident: VONK344 Tattoo: SNB K344 (T&F) Born: 30/09/2014 AMFU NHFU CAFU DDFU

S A V 004 DENSITY 4336
VOND006 BANQUET DESTINY D006 (AI)
 BANQUET CHAMPAGNE B001 (AI) (ET)
 BANQUET YELA Y346 (AI) (ET)
VONE523 BANQUET DREAM E523
 BANQUET DREAM Y151 (AI) (ET)

K344 is strong topped with extra length from hip to pin. Just like his sire, D006, who was our most outstanding son of Density. He sold to Chris and Geoff Roberts for \$10,000. His dam, B001 is a flush sister to C154 who sold for \$30,000 to Bannaby Angus.

Actual Scrotal: 40 cm Age: 16 months Purchaser: \$

January 2016 Angus Australia BREEDPLAN										
Angus	Birth Wt.	Milk	200 Wt.	400 Wt.	600 Wt.	Scrotal Size	Carcase Wt.	EMA	Rump Fat	IMF%
EBV	5.8	11	40	72	100	2.0	52	3.0	-1.1	0.7
Acc	71%	46%	64%	65%	62%	67%	53%	52%	53%	44%

Traits Observed:GL,CE,BWT,200WT(x2),400WT,SS,FAT,EMA,IMF

85 BANQUET KAYDEN K278 HBR

Ident: VONK278 Tattoo: SNB K278 (T&F) Born: 18/09/2014 AMFU NHFU CAFU DDF

BANQUET DUNCAN D412 (AI)
VONG275 BANQUET GARTON G275
 BANQUET IRENE C417
 BANQUET BUNDY B002 (AI) (ET)
VOND350 BANQUET DREAM D350 (AI)
 BANQUET DREAM B201 (AI)

K278 is a deep bodied, soft, easy doing bull. Garton G275 is consistently breeding this type. G275 was a mountain of beef that had softness of skin and extra fat cover. He was purchased by Toora West for \$20,000

Actual Scrotal: 36 cm Age: 17 months Purchaser: \$

January 2016 Angus Australia BREEDPLAN										
Angus	Birth Wt.	Milk	200 Wt.	400 Wt.	600 Wt.	Scrotal Size	Carcase Wt.	EMA	Rump Fat	IMF%
EBV	4.4	9.0	33	63	79	1.4	40	0.3	1.1	1.8
Acc	71%	46%	64%	64%	62%	65%	53%	49%	52%	43%

Traits Observed:CE,BWT,200WT(x2),400WT,SS,FAT,EMA,IMF

86 BANQUET KELLEVE K324 (AI) HBR

Ident: VONK324 Tattoo: SNB K324 (T&F) Born: 23/09/2014 AMFU NHFU CAFU DDFU

WITTALOCKA X10 (AI)
VOND412 BANQUET DUNCAN D412 (AI)
 BANQUET DREAM A250
 S A V 004 DENSITY 4336
VONB176 BANQUET ECLYPTA B176 (AI)
 BANQUET ECLYPTA Z004 (AI)

K234 and his mates Lots 84, 88 and 89 are the youngest spring drop bulls in the Sale. He has tremendous dimension through his hip to pin and displays great expression of his stifle muscle. Both his half brothers have sold for \$6,000 each.

Actual Scrotal: 36 cm Age: 17 months Purchaser: \$

January 2016 Angus Australia BREEDPLAN										
Angus	Birth Wt.	Milk	200 Wt.	400 Wt.	600 Wt.	Scrotal Size	Carcase Wt.	EMA	Rump Fat	IMF%
EBV	8.1	7.0	44	75	106	1.5	54	0.6	-0.6	1.2
Acc	73%	53%	68%	69%	67%	70%	57%	57%	59%	49%

Traits Observed:GL,CE,BWT,200WT(x2),400WT,SS,FAT,EMA,IMF



LOT 87

87 BANQUET KUSHKA K275 HBR

Ident: VONK275 Tattoo: SNB K275 (T&F) Born: 17/09/2014 AMFU NHFU CAFU DDFU

BANQUET DAY DREAM D053 (AI) (ET)
VONH411 BANQUET HUDSON H411
 FORRES WILCOOLA D107
 BANQUET BALLIS B017 (AI)
VONH462 BANQUET NANNY H462
 BANQUET NANNY F472

K275 is a heifers first calf. He has exceptional muscle and deep flank. K275 is very stylish. A common trait in the sons of H411 and the grandsons of Ballis B017.

Actual Scrotal: 37 cm Age: 17 months Purchaser: \$

January 2016 Angus Australia BREEDPLAN										
Angus	Birth Wt.	Milk	200 Wt.	400 Wt.	600 Wt.	Scrotal Size	Carcase Wt.	EMA	Rump Fat	IMF%
EBV	6.9	13	45	85	115	3.0	59	1.5	-1.4	1.1
Acc	69%	42%	63%	63%	61%	66%	51%	50%	52%	41%

Traits Observed:CE,BWT,200WT(x2),400WT,SS,FAT,EMA,IMF

88 BANQUET KARMA K335 HBR

Ident: VONK335 Tattoo: SNB K335 (T&F) Born: 27/09/2014 AMFU NHFU CAFU DDFU

BANQUET DAY DREAM D053 (AI) (ET)
VONH411 BANQUET HUDSON H411
 FORRES WILCOOLA D107

MERCHISTON OUTLOOK 986
VONH630 BANQUET IRENE H630 (AI)
 BANQUET IRENE W1590

Another H411 son from a maiden. K335 has extra length of body and a very strong head. His excellent scrotal development is confirmed but his actual measurement and predicted by his EBVs. This lot may bring you good karma.

Actual Scrotal: 39 cm Age: 16 months Purchaser: \$

January 2016 Angus Australia BREEDPLAN											
Angus	EBV	Birth Wt.	Milk	200 Wt.	400 Wt.	600 Wt.	Scrotal Size	Carcase Wt.	EMA	Rump Fat	IMF%
	Acc	6.9	13	44	84	115	3.3	57	1.6	-0.8	0.9
		68%	39%	62%	63%	61%	66%	51%	49%	51%	40%

Traits Observed: CE, BWT, 200WT(x2), 400WT, SS, FAT, EMA, IMF

89 BANQUET KAWASAKI K336 HBR

Ident: VONK336 Tattoo: SNB K336 (T&F) Born: 28/09/2014 AMFU NHFU CAFU DDFU

BANQUET DAY DREAM D053 (AI) (ET)
VONH411 BANQUET HUDSON H411
 FORRES WILCOOLA D107

BANQUET DAY DREAM D053 (AI) (ET)
VONH442 BANQUET DREAM H442
 BANQUET DREAM E251

K336 is wide topped and thick through the hip and pin. He is very muscular. Like the previous two lots this is a H411 son from a maiden. He carries a double cross of the outstanding D053. He carries six crosses of the Dream family. People who understand line breeding will appreciate the power and predictability this pedigree brings.

Actual Scrotal: 37 cm Age: 16 months Purchaser: \$

January 2016 Angus Australia BREEDPLAN											
Angus	EBV	Birth Wt.	Milk	200 Wt.	400 Wt.	600 Wt.	Scrotal Size	Carcase Wt.	EMA	Rump Fat	IMF%
	Acc	5.9	11	39	68	92	2.8	46	4.6	-0.4	0.6
		70%	44%	65%	65%	63%	70%	54%	53%	55%	45%

Traits Observed: CE, BWT, 200WT(x2), 400WT, SS, FAT, EMA, IMF

90 BANQUET KERNOT K003 HBR

Ident: VONK003 Tattoo: SNB K003 (T&F) Born: 11/03/2014 AMFU NHFU CAFU DDFU

BANQUET XTRA BELIEF X030 (AI)
VONG077 BANQUET GRANADA G077 (AI)
 BANQUET DREAM B436

BANQUET DAY DREAM D053 (AI) (ET)
VONG263 BANQUET DREAM G263 (AI)
 BANQUET DREAM V188 (AI) (ET)

A powerful G077 son to start this run of Autumn bulls. See Lot 13 for more on G077. K003 is long, strong spined with a clean, shiny skin. His dam, G263, is a top young female from the top old breeder V188. V188 has already produced 15 calves and still counting. Her 8 flush brothers averaged \$7,875 in 2002.

Actual Scrotal: 43 cm Age: 23 months Purchaser: \$

January 2016 Angus Australia BREEDPLAN											
Angus	EBV	Birth Wt.	Milk	200 Wt.	400 Wt.	600 Wt.	Scrotal Size	Carcase Wt.	EMA	Rump Fat	IMF%
	Acc	6.0	13	40	74	103	2.8	47	1.8	-1.9	0.6
		61%	47%	65%	67%	70%	70%	56%	54%	56%	46%

Traits Observed: BWT, 200WT, 400WT(x2), 600WT, SS, FAT, EMA, IMF

91 BANQUET KIA K049 HBR

Ident: VONK049 Tattoo: SNB K049 (T&F) Born: 15/04/2014 AMFU NHFU CAFU DDFU

BANQUET EZZA KIWI E214 (AI) (ET)
VONG065 BANQUET GITCH G065 (AI)
 BANQUET ECLYPTA A500

K C F BENNETT TOTAL
VONC238 BANQUET LUCY C238 (AI)
 BANQUET LUCY A252

Progeny of the "G" drop bulls feature in this Sale. K049 is another, son of G065. Check the notes on Lot 1. The dam line of K049 was founded with the purchase of M50 at the Creekton Dispersal. The Creekton cows had great depth of pedigree.

Actual Scrotal: 40 cm Age: 22 months Purchaser: \$

January 2016 Angus Australia BREEDPLAN											
Angus	EBV	Birth Wt.	Milk	200 Wt.	400 Wt.	600 Wt.	Scrotal Size	Carcase Wt.	EMA	Rump Fat	IMF%
	Acc	4.6	15	41	82	101	1.9	58	3.2	0.2	0.1
		60%	44%	63%	66%	69%	68%	54%	52%	54%	44%

Traits Observed: 200WT, 400WT(x2), 600WT, SS, FAT, EMA, IMF



LOT 92

92 BANQUET KIAMA K086 HBR

Ident: VONK086 Tattoo: SNB K086 (T&F) Born: 14/05/2014 AMFU NHFU CAFU DDFU

BANQUET EZZA KIWI E214 (AI) (ET)
VONG065 BANQUET GITCH G065 (AI)
 BANQUET ECLYPTA A500

BANQUET CAPACITY C167 (AI)
VONE558 BANQUET DREAM E558
 BANQUET DREAM V109 (AI) (ET)

Another strong headed son of G065 with a tremendous hindquarter. K086 has a tremendous dam line as well. His dam is by C167 who was retained and then sold to Toora West as a proven sire. Granddam of K086, V109, is the grand dam of our super sire, Duncan D412.

Actual Scrotal: 42 cm Age: 21 months Purchaser: \$

January 2016 Angus Australia BREEDPLAN											
Angus	EBV	Birth Wt.	Milk	200 Wt.	400 Wt.	600 Wt.	Scrotal Size	Carcase Wt.	EMA	Rump Fat	IMF%
	Acc	6.4	11	45	86	116	1.9	57	3.3	0.2	0.7
		70%	41%	64%	66%	69%	67%	54%	50%	52%	41%

Traits Observed: BWT, 200WT, 400WT(x2), 600WT, SS, FAT, EMA, IMF

93 BANQUET KENNETT K064 HBR


Ident: VONK064 Tattoo: ILS K064 (T&F) Born: 1/05/2014

BANQUET BALLIS B017 (AI)
VONF710 BANQUET FORTUNE F710
 BANQUET DREAM C074

G A R GRID MAKER
VICB12 IRELANDS ROSEBUD B12 (AI) (ET)
 IMRAN ROSEBUD U17 (AI) (ET)

K064 is a top sire prospect with an impeccable pedigree. Sired by our top son of Ballis B017 and from an outstanding donor. Rosebud B12 carries Gridmaker and Equator in her pedigree. But it was her grandmother, South Cross L11 that we were targeting. We inspected L11 in W.A when Hamish was a baby. We still remember her. Updated EBVs will be available on Sale Day.

Actual Scrotal: 40 cm Age: 21 months Purchaser: \$

January 2016 Angus Australia BREEDPLAN										
 EBV	Birth Wt.	Milk	200 Wt.	400 Wt.	600 Wt.	Scrotal Size	Carcase Wt.	EMA	Rump Fat	IMF%
	Acc									

Traits Observed:

94 BANQUET KADINA K059 HBR


Ident: VONK059 Tattoo: SNB K059 (T&F) Born: 20/04/2014 AMFU NHFU CAFU DDFU

HINGAIA 469 (AI)
VONG500 BANQUET GENTLEMAN G500 (AI) (ET)
 VERMONT DREAM Y301 (AI) (ET)

BANQUET CALVERT C099 (AI)
VONF338 BANQUET CHAMPAGNE F338
 BANQUET CHAMPAGNE C154 (AI) (ET)

A very rugged G500 son late in the Sale. He is muscular with that great hooding to his eye we see with G500 sons. The students of dam lines will be excited to see Champagne C154 in this pedigree. C154 has produced a sale topping \$32,000 son and another Banquet sire. At our "Belles of Banquet" Sale she attracted the top bid of \$30,000 from Bannaby Angus.

Actual Scrotal: 40 cm Age: 22 months Purchaser: \$

January 2016 Angus Australia BREEDPLAN										
 EBV	Birth Wt.	Milk	200 Wt.	400 Wt.	600 Wt.	Scrotal Size	Carcase Wt.	EMA	Rump Fat	IMF%
	Acc	6.5 71%	13 48%	45 67%	84 67%	121 71%	1.7 70%	54 57%	4.7 54%	-1.7 56%

Traits Observed: BWT,200WT,400WT(x2),600WT,SS,FAT,EMA,IMF

95 BANQUET KELSON K096 HBR


Ident: VONK096 Tattoo: SNB K096 (T&F) Born: 27/05/2014 AMFU NHFU CAFU DDFU

HINGAIA 469 (AI)
VONG500 BANQUET GENTLEMAN G500 (AI) (ET)
 VERMONT DREAM Y301 (AI) (ET)

BANQUET CALVERT C099 (AI)
VONF320 BANQUET KITE F320
 BANQUET KITE Z002 (AI)

These soft, smooth skinned, easy doing sons of G500 give us great hope for his daughters. Imagine a paddock of big volume, soft skinned cows by G500 with sappy calves at foot. That's what we target.

Actual Scrotal: 40 cm Age: 20 months Purchaser: \$

January 2016 Angus Australia BREEDPLAN										
 EBV	Birth Wt.	Milk	200 Wt.	400 Wt.	600 Wt.	Scrotal Size	Carcase Wt.	EMA	Rump Fat	IMF%
	Acc	6.1 72%	13 46%	41 66%	80 67%	119 70%	2.4 69%	49 56%	-0.1 53%	0.2 55%

Traits Observed: BWT,200WT,400WT(x2),600WT,SS,FAT,EMA,IMF

96 BANQUET KEMP K041 (TW) HBR


Ident: VONK041 Tattoo: SNB K041 (T&F) Born: 8/04/2014 AMFU NHFU CAFU DDFU

HINGAIA 469 (AI)
VONG500 BANQUET GENTLEMAN G500 (AI) (ET)
 VERMONT DREAM Y301 (AI) (ET)

BANQUET CORTEZ C153 (AI)
VONF553 BANQUET DREAM F553
 BANQUET DREAM D517

K041 is your last chance to grab a G500 son in this Sale. He is rugged, strong headed and deep chested, typical of the Hingaia 469 influence. His grandsire, C153, was used heavily as a superior calving ease sire. He proved to be much more, adding length and muscle to his sons and very maternal daughters to our herd.

Actual Scrotal: 39 cm Age: 22 months Purchaser: \$

January 2016 Angus Australia BREEDPLAN										
 EBV	Birth Wt.	Milk	200 Wt.	400 Wt.	600 Wt.	Scrotal Size	Carcase Wt.	EMA	Rump Fat	IMF%
	Acc	6.2 57%	11 47%	45 58%	87 61%	122 58%	1.5 52%	58 52%	4.0 44%	-2.3 45%

Traits Observed: BWT,200WT,400WT,600WT(x2),SS,FAT,EMA,IMF

97 BANQUET KELSO K093 (TW) HBR


Ident: VONK093 Tattoo: SNB K093 (T&F) Born: 26/05/2014 AMFU NHFU CAFU DDFU

S A NEUTRON 377
NGMD337 BOOROOMOOKA ASTRON D337 (AI)
 BOOROOMOOKA VOLITION X199 (AI) (ET)

QUARTER-WAY VEEPER A53
VOND003 BANQUET QUIET D003 (AI)
 BANQUET QUIET Y091 (AI)

K093 is a calving ease sire. He is long bodied and fine shouldered. His dam is a big, long, powerful cow with fine skin. She has two daughters retained.

Actual Scrotal: 38 cm Age: 20 months Purchaser: \$

January 2016 Angus Australia BREEDPLAN										
 EBV	Birth Wt.	Milk	200 Wt.	400 Wt.	600 Wt.	Scrotal Size	Carcase Wt.	EMA	Rump Fat	IMF%
	Acc	3.9 60%	14 52%	36 61%	64 62%	92 60%	1.4 55%	51 54%	5.1 50%	0.2 50%

Traits Observed: 200WT,400WT,600WT,SS,FAT,EMA,IMF

98 BANQUET KOBO K099 HBR


Ident: VONK099 Tattoo: SNB K099 (T&F) Born: 29/05/2014 AMFU NHFU CAFU DDFU

S A NEUTRON 377
NGMD337 BOOROOMOOKA ASTRON D337 (AI)
 BOOROOMOOKA VOLITION X199 (AI) (ET)

BANQUET TIME FRAME Y135 (AI) (ET)
VONB006 BANQUET CAROLYN B006 (AI) (ET)
 YTHANBRAE CONVERGENCE S113 (AI) (ET)

K099 is a thick, soft and earlier maturing bull with exceptional calving ease. His dam is magnificent. One of our best daughters of the \$50,000 Time Frame. We used a son of B006.

Actual Scrotal: 38 cm Age: 20 months Purchaser: \$

January 2016 Angus Australia BREEDPLAN										
 EBV	Birth Wt.	Milk	200 Wt.	400 Wt.	600 Wt.	Scrotal Size	Carcase Wt.	EMA	Rump Fat	IMF%
	Acc	0.9 74%	17 57%	33 69%	61 69%	77 71%	2.1 68%	46 61%	4.8 59%	2.5 60%

Traits Observed: BWT,400WT(x2),600WT,SS,FAT,EMA,IMF



LOT 99

99 BANQUET KRUEGER K111 (AI) (ET) HBR

Ident: VONK111 Tattoo: SNB K111 (T&F) Born: 3/06/2014 AMFU NHFU CAFU DDFU

S A V HERITAGE 6295
USA16687737 S A V HARVESTOR 0338
 S A V EMBLYNETTE 7749

HINGAIA 469 (AI)
VONW164 BANQUET JULIE W164 (AI) (ET)
 ABBARINGA JULIE L10+91 (AI)

An outcross son of the SAV power sire, Harvestor. K111 is from one of our greatest donors. Julie W164 has 30 progeny at Banquet. One of her sons, G464, has been retained and sons have sold to \$19,000, \$16,000 and \$10,000 twice.

Actual Scrotal: 40 cm Age: 20 months Purchaser: \$

January 2016 Angus Australia BREEDPLAN											
Angus	EBV	Birth Wt.	Milk	200 Wt.	400 Wt.	600 Wt.	Scrotal Size	Carcase Wt.	EMA	Rump Fat	IMF%
	Acc	7.1	13	49	91	115	1.8	64	3.9	0.0	0.7
		63%	54%	60%	60%	58%	55%	52%	48%	48%	46%

Traits Observed:200WT,400WT(x2),600WT,SS,FAT,EMA,IMF

100 BANQUET KYHUNA K056 HBR

Ident: VONK056 Tattoo: SNB K056 (T&F) Born: 19/04/2014 AMFU NHFU CAFU DDF

BANQUET EZZA KIWI E214 (AI) (ET)
VONG065 BANQUET GITCH G065 (AI)
 BANQUET ECLYPTA A500

RAFF APPEAL D265
VONF480 BANQUET ECLYPTA F480 (AI)
 BANQUET ECLYPTA A112 (AI) (ET)

K056 is s soft, easy doing and deep flanked bull, typical of the Hingaia 469 line. Remember G065 is a grandson of 469. The grand dam of K056, A112, is our first choice from the Eclipta Family. We bred her from the old J29, that John and Robyn Blyth so kindly loaned us.

Actual Scrotal: 40 cm Age: 22 months Purchaser: \$

January 2016 Angus Australia BREEDPLAN											
Angus	EBV	Birth Wt.	Milk	200 Wt.	400 Wt.	600 Wt.	Scrotal Size	Carcase Wt.	EMA	Rump Fat	IMF%
	Acc	4.5	12	35	71	84	2.4	45	1.7	0.9	0.5
		68%	41%	64%	66%	69%	68%	53%	37%	40%	33%

Traits Observed:BWT,200WT,400WT(x2),600WT,SS



LOT 101

101 BANQUET KIRBY K007 (AI) HBR

Ident: VONK007 Tattoo: SNB K007 (T&F) Born: 19/03/2014 AMFU NHFU CAFU DDFU

BANQUET DANBY D347 (AI)
VONG228 BANQUET GURRY G228 (AI)
 BANQUET DREAM E255

BANQUET DREAM BOY D055 (AI) (ET)
VONF639 BANQUET WIVEM F639
 BANQUET WIVEM X168 (AI)

This is a thick, easy doing bull of exceptional structure to finish our Sale. He has extra length and we admire his scrotal development. K007 is the only son of G228 we had eligible for this Sale. We will have more in the future. G228 appealed as a youngster for his type and extra cover. His time at Moura QLD proved he could grow. Peter Attard at Shingle Hut shed a tear when he lost G228.

Actual Scrotal: 45 cm Age: 23 months Purchaser: \$

January 2016 Angus Australia BREEDPLAN											
Angus	EBV	Birth Wt.	Milk	200 Wt.	400 Wt.	600 Wt.	Scrotal Size	Carcase Wt.	EMA	Rump Fat	IMF%
	Acc	6.0	11	38	70	97	2.9	45	-0.9	1.9	1.3
		67%	39%	63%	65%	68%	68%	52%	50%	53%	41%

Traits Observed:GL,BWT,200WT,400WT(x2),600WT,SS,FAT,EMA,IMF



BANQUET GURRY G228 – SIRE OF LOT 101



LOTS 92 & 16

**We thank all Purchasers,
Bidders & Visitors
for their support.**

**Please join us for
refreshments after the sale.**

EBV Quick Reference for Angus Bull Sale

Lot No.	Animal Ident	Calving Ease Dir	Calving Ease Dtrs	Gest Length	Birth Wt	200 Day Wt	400 Day Wt	600 Day Wt	Mat Cow Wt	Milk	Scrotal Size	Days to Calving	Carc. Wt	EMA	Rib Fat	Rump Fat	RBV %	IMF %	Docility	Angus Breeding	Domestic	Heavy Grain	Heavy Grass
1	VONK079	-3.1	-2.8	-1.9	6.9	49	95	125	117	12	2.3	-4.0	66	1.7	-0.4	0.1	0.2	0.8	--	\$102	\$99	\$101	\$104
2	VONK031	-4.5	-2.1	2.0	7.6	47	88	116	114	11	2.7	-3.1	57	3.9	-0.1	0.2	0.1	1.2	--	\$94	\$93	\$92	\$96
3	VONK084	-6.3	-3.9	2.5	8.5	51	93	126	110	10	2.8	-3.8	63	3.2	-0.6	0.0	0.4	1.3	--	\$103	\$96	\$105	\$103
4	VONK001	0.3	2.3	-2.2	4.9	43	81	108	97	15	2.8	-3.6	54	2.4	-2.6	-2.3	1.4	1.4	--	\$107	\$106	\$112	\$105
5	VONK025	-7.9	-2.5	-1.7	7.5	51	90	112	112	12	1.7	-3.2	66	3.6	0.7	-0.3	0.6	0.6	--	\$78	\$87	\$68	\$84
6	VONK081	1.5	2.4	-3.8	4.3	39	74	96	89	13	1.4	-1.0	49	6.0	-0.8	-1.3	1.5	0.5	--	\$89	\$99	\$79	\$96
7	VONK085	-3.2	-2.5	-1.6	7.7	49	87	126	125	11	2.1	-1.9	56	0.2	-0.9	-1.0	0.1	1.4	--	\$95	\$89	\$98	\$96
8	VONK078	--	--	--	--	--	--	--	--	--	--	--	--	--	--	--	--	--	--	--	--	--	--
9	VONK069	3.4	1.9	-3.0	4.8	39	76	112	119	11	1.2	0.0	48	2.2	-1.3	-2.4	0.9	1.0	--	\$93	\$92	\$93	\$96
10	VONK039	-0.3	-0.2	-5.1	7.1	45	83	118	119	11	2.2	-2.3	57	3.7	-0.8	-0.1	0.4	1.3	--	\$104	\$97	\$106	\$105
11	VONK067	-1.2	-0.6	-3.9	6.6	47	86	118	114	11	2.1	-3.5	57	3.6	-1.0	-1.5	1.4	0.7	--	\$105	\$102	\$105	\$106
12	VONK082	0.5	-0.1	-3.0	6.1	43	82	111	117	10	0.9	-1.1	51	2.1	-0.4	-1.0	0.3	0.8	--	\$87	\$92	\$83	\$92
13	VONK077	-1.9	0.6	-2.1	5.6	43	84	111	110	16	4.1	-2.9	55	3.7	-1.8	-1.9	2.0	0.7	--	\$99	\$102	\$99	\$101
14	VONK046	-0.5	1.6	-3.0	4.7	37	66	89	83	12	1.9	-2.9	46	4.6	0.3	0.0	0.7	0.8	--	\$83	\$89	\$74	\$89
15	VONK063	-3.6	-0.5	-3.4	7.1	47	84	116	116	9	2.2	-3.7	58	1.9	-0.3	0.0	0.4	1.2	--	\$99	\$94	\$100	\$99
16	VONK088	-0.6	-1.1	-1.9	6.4	44	84	114	121	10	1.3	-0.6	57	2.9	-1.5	-1.9	1.4	0.0	--	\$84	\$92	\$75	\$92
17	VONK114	-0.8	-2.9	-2.2	6.0	38	74	97	97	9	1.9	-3.3	47	2.2	-0.3	-0.2	0.7	0.8	--	\$86	\$91	\$81	\$89
18	VONK072	-1.7	-1.2	-2.3	6.8	42	79	109	111	9	1.9	-3.6	49	-0.1	1.4	2.3	-1.3	1.1	--	\$86	\$84	\$80	\$90
19	VONK037	0.5	0.0	-3.5	4.8	44	78	112	107	14	2.0	-3.0	59	4.0	2.1	2.5	-0.7	1.2	--	\$99	\$92	\$93	\$104
20	VONL022	1.7	-0.8	-4.3	3.4	43	79	101	88	17	1.6	-3.8	58	6.1	0.1	-0.8	0.3	2.1	--	\$107	\$105	\$111	\$105
21	VONL021	-1.8	-2.4	-2.5	6.5	49	87	117	102	15	2.4	-4.3	65	5.1	-1.2	-1.9	0.7	2.5	--	\$117	\$107	\$132	\$110
22	VONL008	-0.8	1.1	-3.5	5.6	50	89	119	117	14	2.0	-3.7	61	0.7	-0.7	-0.4	-0.1	1.9	--	\$107	\$102	\$114	\$105
23	VONL005	1.6	1.6	-4.1	5.0	45	88	119	122	15	1.8	-2.7	61	2.5	-1.1	-1.1	0.4	1.7	--	\$111	\$106	\$119	\$109
24	VONL035	-0.4	0.3	-0.8	4.8	40	78	105	103	21	1.0	-1.5	55	2.5	-0.9	-0.6	0.3	0.8	--	\$82	\$88	\$74	\$88
25	VONK151	-0.3	0.3	-1.2	3.7	33	65	77	67	12	1.6	-1.3	38	4.2	-0.1	0.1	0.6	0.4	--	\$65	\$85	\$47	\$76
26	VONK144	-2.6	0.2	-1.6	5.4	43	79	107	105	17	3.8	-1.9	54	4.1	-0.9	-0.7	1.3	0.5	--	\$86	\$91	\$77	\$92
27	VONK157	-2.4	-0.6	-1.5	5.5	36	65	86	96	13	2.7	-1.8	42	2.5	-1.7	-1.5	1.1	0.7	--	\$66	\$79	\$57	\$72
28	VONK133	-5.5	-2.1	-0.5	5.9	35	58	74	83	11	2.7	-2.2	36	3.0	-0.8	-0.5	1.2	0.4	--	\$51	\$70	\$34	\$59
29	VONK155	-3.6	0.8	-1.5	6.1	39	73	101	116	12	2.7	-1.9	48	1.6	-2.1	-1.8	1.4	0.4	--	\$74	\$82	\$68	\$79
30	VONK215	-7.3	-3.1	-2.2	7.3	52	93	129	123	13	2.1	-3.6	65	3.6	0.3	0.5	0.4	1.0	--	\$99	\$91	\$97	\$101
31	VONK290	-0.4	0.4	-3.4	3.8	41	87	113	102	18	2	-0.9	62	2.4	-2.3	-2.5	1.2	1.4	--	\$99	\$103	\$102	\$100
32	VONK283	-2.5	-2.1	-2.1	4.9	45	82	109	103	14	2.7	-3.8	63	6.4	-0.6	-0.2	0.6	1.4	--	\$101	\$98	\$101	\$101
33	VONK250	0.1	0.1	-0.8	5.7	42	84	109	105	10	2.8	-3.0	55	1.8	-0.8	-0.4	0.1	1.4	--	\$99	\$100	\$101	\$100
34	VONK195	--	--	--	--	--	--	--	--	--	--	--	--	--	--	--	--	--	--	--	--	--	--
35	VONK190	-2.7	-0.9	-2.4	6.1	45	81	115	123	12	1.1	-1.1	61	4.6	-2.3	-2.3	1.2	1.2	--	\$92	\$91	\$94	\$94
36	VONK204	-6.0	-2.1	-1.0	7.4	47	86	118	126	12	1.6	-1.8	62	2.1	-1.8	-1.5	0.8	1.2	--	\$86	\$86	\$87	\$87
37	VONK249	-3.1	-2.8	-3.7	6.6	48	94	126	128	14	1.7	-2.2	65	2.1	-0.4	-0.4	0.2	1.2	--	\$99	\$96	\$100	\$100
38	VONK247	-2.4	1.7	-2.1	5.3	48	92	125	120	17	2.5	-4.3	65	3.3	-0.7	-0.3	0.9	0.6	--	\$109	\$103	\$107	\$111
39	VONK246	-0.1	2.4	-6.7	5.0	52	95	134	141	15	2.8	-5.1	68	4.0	-0.7	-0.6	1.3	0.7	--	\$125	\$112	\$129	\$124



RECESSIVE GENETIC CONDITIONS

INFORMATION FOR BULL BUYERS

This is information for bull buyers about the recessive genetic conditions, Arthrogryposis Multiplex (AM), Hydrocephalus (NH), Contractural Arachnodactyly (CA) and Developmental Duplications (DD).

Putting undesirable Genetic Recessive Conditions in perspective

All animals, including humans, carry single copies (alleles) of undesirable or “broken” genes. In single copy form, these undesirable alleles usually cause no harm to the individual. But when animals carry 2 copies of certain undesirable or “broken” alleles it often results in bad consequences. Advances in genomics have facilitated the development of accurate diagnostic tests to enable the identification and management of numerous undesirable or “broken” genes. Angus Australia is proactive in providing its members and their clients with relevant tools and information to assist them in the management of known undesirable genes and our members are leading the industry in their use of this technology.

Key point: With today’s DNA tools undesirable genetic conditions can be managed!

What are AM, NH, CA and DD?

AM, NH, CA and DD are all recessive conditions caused by “broken” alleles within the DNA of individual animals. When a calf inherits 2 copies of the AM or NH alleles their development is so adversely affected that they will be still-born.

In other cases, such as CA and DD, calves carrying 2 copies of the broken allele may reach full-term. In such cases the animal may either appear relatively normal, or show physical symptoms that affect their health and/or performance.

Key point: The number of reported observations of AM, NH, CA and DD calves is very low and there is certainly no need for panic.

How are the conditions inherited?

Research in the U.S. and Australia indicates that AM, NH, CA and DD are simply inherited recessive conditions. This means that a single gene (or pair of alleles) controls the condition. For this mode of inheritance two copies of the undesirable allele need to be present before the condition is seen; in which case you may get an abnormal calf. A more common example of a trait with a simple recessive pattern of inheritance is black and red coat colour.

Animals with only one copy of the undesirable allele (and one copy of the normal form of the allele) appear normal and are known as “carriers”.

What happens when carriers are mated to other animals?

Carriers, will on average, pass the undesirable allele to a random half (50 %) of their progeny.

When a carrier bull and carrier cow is mated, there is a 25% chance that the resultant calf will inherit two normal alleles, a 50% chance that the mating will result in a carrier (i.e. with just 1 copy of the undesirable allele, and a 25% chance that the calf will inherit two copies of the undesirable gene.

If animals tested free of the undesirable gene are mated to carrier animals the condition will not be expressed at all. All calves will appear normal, but approximately half (50%) could be expected to be carriers.

Key point: For the condition to be expressed the undesirable gene needs to be present on both sides of the pedigree and both the sire and dam need to be a carrier.

How is the genetic status of animals reported?

DNA-based diagnostic tests have been developed which can be used to determine whether an individual animal is either a carrier or free of the alleles resulting in AM, NH, CA or DD.

Angus Australia uses advanced software to calculate the probability of (untested) animals to being carriers of AM, NH, CA or DD. The software uses the test results of any relatives in the calculations and the probabilities may change as new results for additional animals become available.

The genetic status of animals is being reported using five categories:

AMF	Tested AM free
AMFU	Based on pedigree AM free – Animal has not been tested
AM__%	__% probability the animal is an AM carrier
AMC	Tested AM-Carrier
AMA	AM-Affected

For NH, CA and DD, simply replace AM in the above table with NH, CA or DD.

Registration certificates and the Angus Australia web-database display these codes. This information is displayed on the animal details page and can be accessed by conducting an “Animal Search” from the Angus Australia website or looking up individual animals listed in a sale catalogue.

Key point: The genetic status of an animal is subject to change and will be re- analysed and adjusted each week as DNA test results of relatives are received.

Implications for Commercial Producers

Your decision on the importance of the genetic condition status of replacement bulls should depend on the genetics of your cow herd (which bulls you previously used) and whether some female progeny will be retained or sold as breeders.

Most Angus breeders are proactive and transparent in managing known genetic conditions, endeavouring to provide the best information available.

Key point: The greatest risk to the commercial sector from undesirable genetic recessive conditions comes from unregistered bulls with unknown genetic background.

The genetic condition testing that Angus Australia seedstock producers are investing in provides buyers of registered Angus bulls with unmatched quality assurance.

For further information contact Angus Australia’s Breed Development and Innovation Manager at (02) 6773 4602.



IMPORTANT NOTICES FOR PURCHASERS

~ SALE CATALOGUE DISCLAIMER ~

All reasonable care has been taken by the vendor to ensure that the information provided in this catalogue is correct at the time of publication. However, neither the vendor nor the selling agents make any other representations about the accuracy, reliability or completeness of any information provided in this catalogue and do not assume any responsibility for the use or interpretation of the information included in this catalogue. You are encouraged to seek independent verification of any information contained in this catalogue before relying on such information.

~ DNA PATERNITY VERIFICATION ~

It is a requirement of Angus Australia that all bulls used to sire calves for registration in the Angus Australia Herd Book Register, Red Angus Register or Angus Performance Register must have been DNA paternity verified if they are born in or after the 'Y' year (2003). Buyers intending to use bulls listed in this catalogue to produce calves to be registered in these registers should obtain DNA paternity verification on those bulls before they are used for breeding.

~ PRIVACY INFORMATION ~

In order for Angus Australia to process the transfer of a registered animal in this catalogue, the vendor will need to provide certain information to Angus Australia and the buyer consents to the collection and disclosure of that information by Angus Australia in certain circumstances. If the buyer does not wish for his or her information to be stored and disclosed by Angus Australia, the buyer must complete the form included below and forward it to Angus Australia. If the form is not completed, the buyer will be taken to have consented to the disclosure of such information.

BUYER'S OPTION TO OPT OUT OF DISCLOSING PERSONAL INFORMATION TO THE ANGUS AUSTRALIA

If you do not complete this form, you will be taken to have consented to Angus Australia using your name, address and phone number for the purposes of effecting a change of registration of the animal(s) that you have purchased, maintaining its databases and disclosing that information to its members on its website.

I, the buyer of animals with the following registration numbers from member (name) do not consent to Angus Australia using my name, address and phone number for the purposes of effecting a change of registration of the following animal(s) that I have purchased, maintaining its databases and disclosing that information to its members on its website.

Signature:

Date:

Please forward this completed consent form to Angus Australia, Glen Innes Road, Locked Bag 11, Armidale NSW 2350. If you have any queries, please telephone 02 6772 3011 or e-mail office@angusaustralia.com.au.

Bringing a New Bull Home

Buying a bull is an investment. This investment should contribute to the genetics and sale income of your herd for many years. If you are to get the most from your new bull, it pays to look after him well, especially in the first season of use. This report discusses management strategies to maximise the productive life of your bulls.

Arrival

New bull buyers are often concerned about the apparent bad temperament of a bull that seemed quiet enough when purchased. Bulls can become upset and excited in the sale and delivery process. They are subjected to strange yards, different noises, loss of their mates, different people, different handling methods, trucking, unloading, new paddocks and different water and feed. This can upset animals which are normally very quiet.

When the bull arrives home, unload him at the yards into a group of house cows, steers or herd cows. Never jump the bull from the back of a truck into a paddock. Bulls from different origins should be put into separate yards with other cattle, steers or cows, for company.

Provide hay and water, then leave the bull alone until the next day, before giving routine health treatments.

Mating new bulls

Newly purchased young bulls should not be multiple joined with older herd bulls. They will not be allowed to work much and in keeping them away from the cows, the older, dominant bull will knock them around.

Use new bulls in either single sire groups or with other young bulls their own age. If a number of young bulls are to be used together, run them

together for a few weeks before joining starts. They sort out their pecking order quickly and have few problems later.

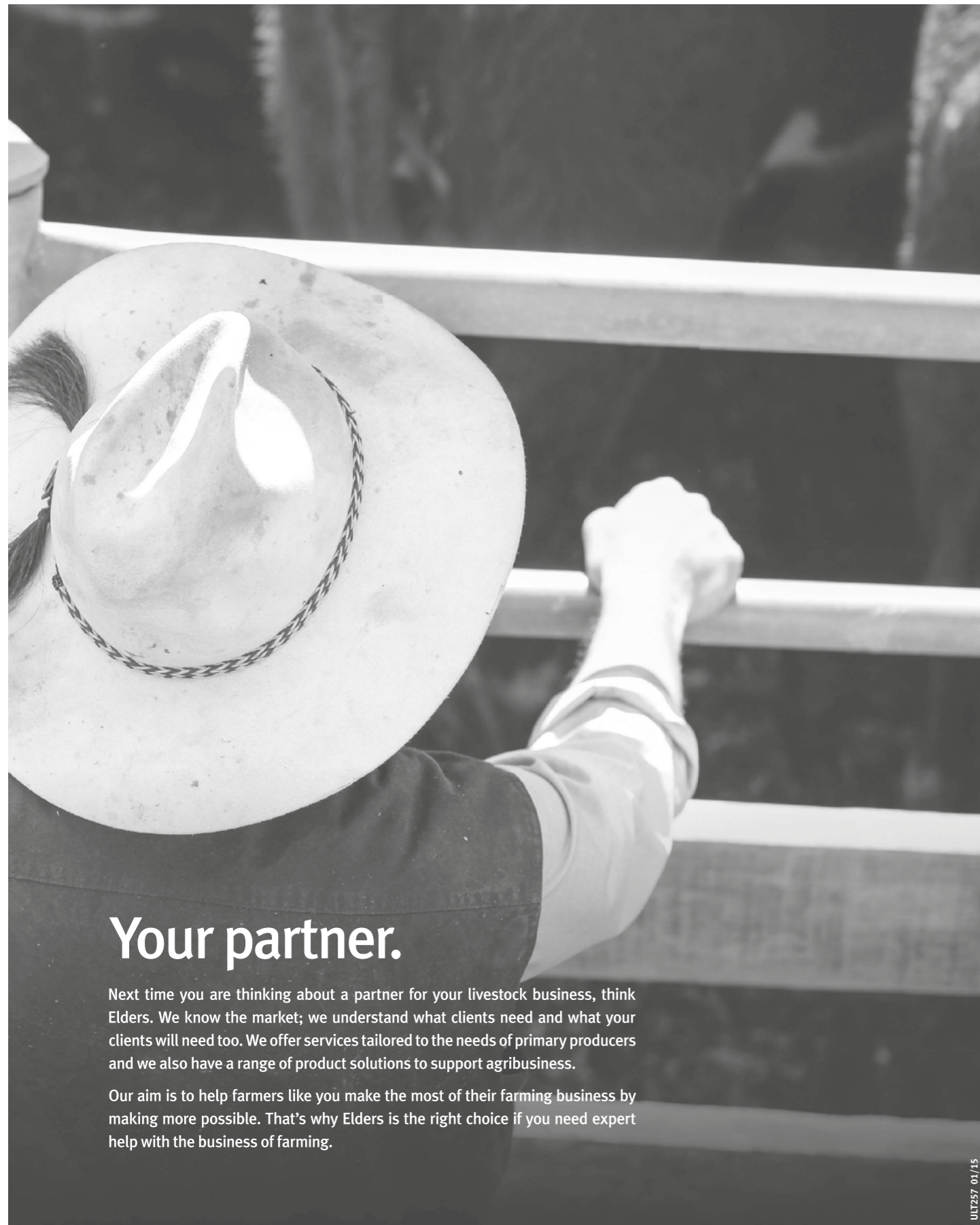
The Australian Association of Cattle Veterinarians (AACV) defines a normal, fertile bull as "expected to get 90% of 50 normal, cycling, disease free females pregnant within 9 weeks, and 60% of these should become pregnant in the first three weeks of joining". This expectation would apply to 2 year old bulls, but not to younger bulls.

During mating

Check bulls at least twice each week. Watch them work if possible and pay particular attention to any sign of abnormal serving problems like "corkscrew penis" or too many cows returning to heat.

Have a spare bull or bulls available to replace any that break down. If you have to replace a bull, get the bull checked by your vet. Sometimes prompt treatment for small problems can avoid culling. Vendors that provide guarantees on their bulls will usually require a veterinary certificate indicating the problem with unsatisfactory bulls.

Rotate bulls in single sire groups to make sure that any bull infertility is covered. Single sire joining works well but it has risks. The bulls must be checked regularly and carefully or the bulls rotated every one or two cycles.



Your partner.

Next time you are thinking about a partner for your livestock business, think Elders. We know the market; we understand what clients need and what your clients will need too. We offer services tailored to the needs of primary producers and we also have a range of product solutions to support agribusiness.

Our aim is to help farmers like you make the most of their farming business by making more possible. That's why Elders is the right choice if you need expert help with the business of farming.

UIT257 01/15

elders.com.au

For more information contact:
 Ross Milne 0408 057 558
 Allan Hickey 0409 675 948



Local advice that makes a world of difference.

At Landmark, you can rely on a vast network of committed advisors who have the resources and the expertise for all your livestock needs. Our combined experience and our knowledge of the livestock industry, means we can add real value to your business and help you make the most of every opportunity. We understand the buying and selling of sheep and cattle, and with access to more domestic markets and international partnerships, we can secure better prices for you. That's why more Australian farmers look to us.

NEW SOUTH WALES	John Settree Joel Fleming	0408 297 368 0467 725 195	Andrew Wishart	0407 424 706
VICTORIA	Kevin Norris Andrew Sloan	0419 482 151 0428 522 204	Ray Attwell Peter Godbolt	0428 836 136 0457 591 929
QUEENSLAND	Mark Scholes	0409 229 651	Colby Ede	0417 265 980
SOUTH AUSTRALIA	Richard Miller	0428 849 327	Gordon Wood	0408 813 215

landmark.com.au

Truck provided courtesy of Harvey's Transport, Hamilton.



Want some willing workers? Then get yourself some

BANQUET WHITE SUFFOLK RAMS



40 rams for private selection - Well grown and ready to work



For inquiries and inspection:
Contact Gordon Branson
Phone 0488 992 767

★ Get yourself some Super Suffolks ★



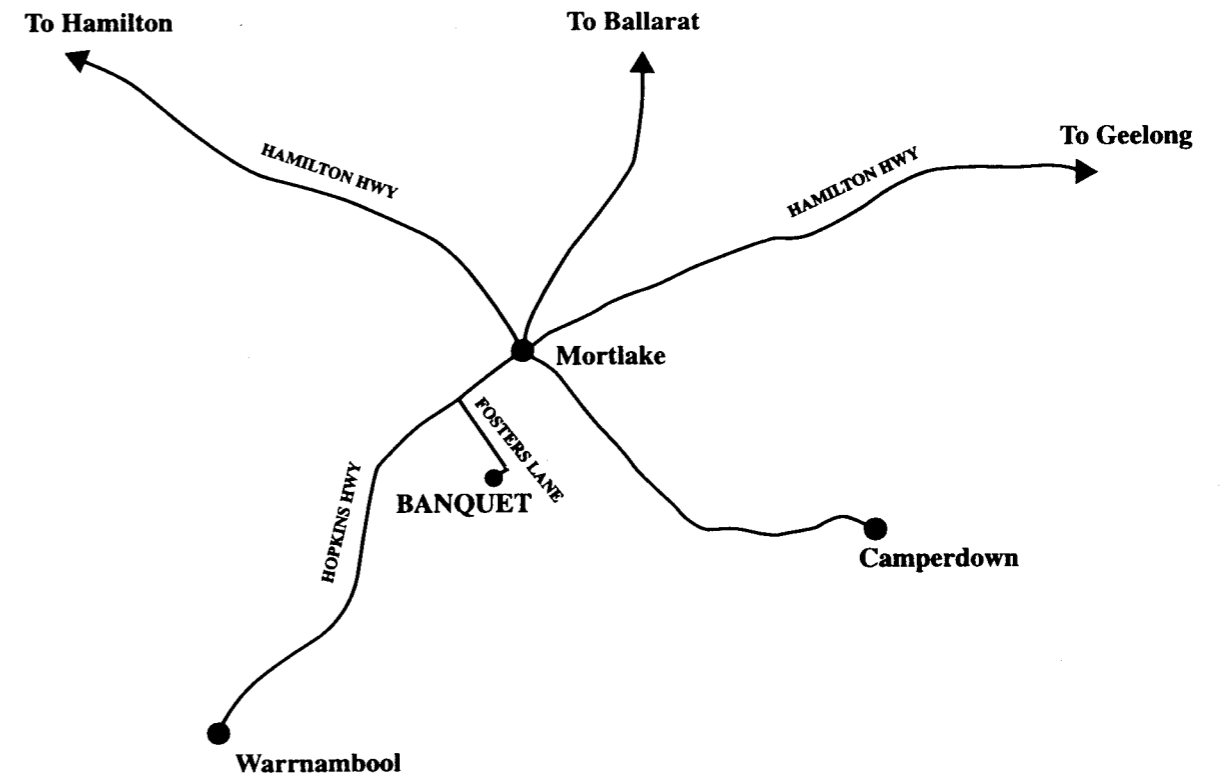
Sale rams sired by Allendale 121105 (pictured) purchased for \$4,000.

★ RAMS AVAILABLE NOW!! ★



For inquiries contact Hamish Branson
Phone 0419 884 839

LOCATION MAP



TRAVEL TIMES:

From - Melbourne	3 hours	From - Warrnambool	30 mins
From - Hamilton	60 mins	From - Geelong	2 hours
From - Ballarat	1.5 hours		

ACCOMMODATION:

Dalvue Motel Terang: (03) 5592 1566
Mid City Motel Warrnambool: (03) 5562 3866

Motels are available in Warrnambool, Camperdown, Hamilton or Terang.
Should you require accommodation, contact us or the selling agents for bookings.

**BE SURE OF A CATALOGUE
BRING THIS ONE.**

» Doodler's Delight «

Highlights of 2015



Top Price Bull

Pictured with the \$40,000 sale topping bull at the 2015 Banquet Angus bull sale, Banquet Jupiter J263, are from left, Hamish, Gordon and Noeleen Branson, Banquet Angus, Mortlake; purchasers Richard and Sandra Retallack, Glengowan Angus stud, Newbridge, NSW; and Stephen and Dianna Branson, Banquet.



2nd Top Price Bull

Banquet Jeofail J205 sold for the \$20,000 second top price at the Banquet sale, being purchased by David and Gail Geddes, Warranboo Partnership, Holbrook, NSW, through Elders Holbrook's Tim Wright.



Top Price Female

Pictured with the \$30,000 top priced cow, Banquet Champagne C154 and her bull calf are vendors Stephen, Hamish, Gordon, Dianna and Noeleen Branson, Banquet Angus, Mortlake, purchaser Keith Kerridge, Bannaby Angus, Taralga, NSW his manager Glynn Langford and overseer Charles Branson and sale auctioneers Paul Dooley and Ross Milne.



◀ Dianna and Banquet Yendi K411 who was Reserve Champion All Breeds Heifer at 2015 Colac Show. Luke and Mac Aisthorpe from Monto QLD. purchased K411 at our Belles of Banquet Sale.

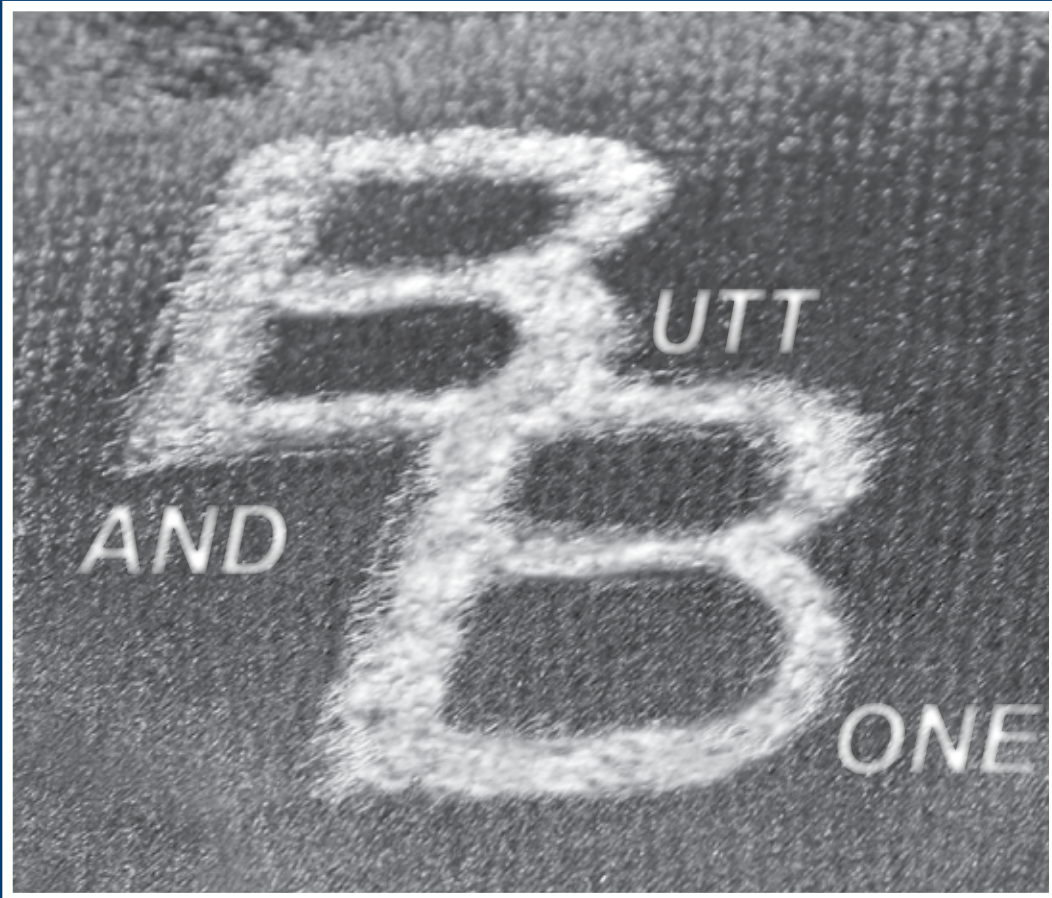


Hamish with his encouragement award which was presented at the 2016 Angus Youth National Roundup. ▶



FREE DELIVERY:
Banquet offers free delivery to the buyer's nearest town on route to Adelaide, SA and Emerald, QLD and to the property within Vic.





The logo for Banquet Angus. On the left is a black and white profile of a cow's head. To its right, the word 'BANQUET' is written in a large, bold, blue, serif font. Below 'BANQUET' is the tagline 'A GENETIC FEAST' in a smaller, blue, sans-serif font, followed by two small blue squares. To the right of the tagline is a blue square containing two white 'B's stacked vertically.

www.banquetangus.com.au